

#1

# Slide

Inspiration for architecture, design,  
retail and trade



## This is how the world lives

**Kees Christiaanse plans the Smart City**

**Kitchen and living room become one**



## We move the world!

Nothing moves more than an idea whose time has come. This particularly applies to sliding solutions. Under the banner of urbanization, more and more people are living in less and less space. Living space is becoming a scarce resource. It needs to be used creatively. Sliding solutions provide the necessary freedom. Space can be gained in places by succeeding in elegantly moving, folding and temporarily concealing all kinds of doors and walls.

For us, sliding is more than clever technology. It is a future-oriented mindset that can move a great deal. We would like to help architects, designers, joiners/cabinet makers and sales partners to make multi-functional use of buildings, rooms and furniture with inspirational solutions – and make a contribution to getting a grip on one of the major challenges of our times.

Things have also been moving as far as we are concerned. Hawa and ECU have now joined forces and become Hawa Sliding Solutions. As a result, our partners obtain all of their solutions from a single source. We want to move more together – all over the world. We are therefore going to show you what moves people in their living environments in this specialist magazine. We hope you get a great deal of inspiration with Slide #1 from Hawa Sliding Solutions!

**Gregor Haab and Heinz Haab**  
CEOs Hawa Sliding Solutions



News	The most important information in brief	6
Expert	Conversation with Kees Christiaanse	10
Focus	Out and about all over the world	16
Facts	The atlas of sliding	24
Strategy	The boss analyzes the situation	26
Solutions	Wonderful convertible rooms	30
Tool box	Sliding guidebook	35
Exclusive	Top chef Anton Mosimann never stops	50



16

# This is how the world lives

Sometimes, our own home reveals more about our personality than we would like. We visited people on different continents at home – and discovered that some problem zones can be literally pushed out of the way.



10

# How will we be living tomorrow?

Hamburg, Singapore, Zurich – if cities want a new look, top architect Prof. Kees Christiaanse designs it together with his office KCAP. Until recently, the globe-trotter researched the global living and urbanization trends at Future Cities Laboratory in Singapore. In the interview he explains what makes cities and rooms liveable.

# Out and about

Watch out world, here we come! Heinz Haab, commercial director of Hawa Sliding Solutions, fulfilled a dream when the Experience Center was opened in Singapore. He explains why the company scores points in different cultures – and how it wants to expand internationally.

26



35

# Tool box

Discover the right fittings for your ideas in our sliding guidebook





The best of two worlds

The new Hawa Sliding Solutions logo is in place: The two Swiss companies Hawa AG from Mettmensstetten and Eku AG from Sirmach have been operating as one company since 2017 – as Hawa Sliding Solutions. The integration of the companies should be completed by the end of 2018. Having a joint presence is more than a formal step. It is intended to push ahead the international growth initiatives of the leading provider of sliding solutions.

Customers such as dealers, architects and joiners/cabinet makers will have a bigger range of products from a single source – and can expect additional support. Regardless of where they are in the world. The CEOs of the family-run company, Gregor and Heinz Haab, are looking optimistically towards the future. “Our employees are motivated – and the feedback from our partners and customers has been extremely encouraging!”

There's a suitable solution for every sliding requirement – which is what the new logo represents.



Joiners/cabinet makers and designers are delighted: The Eku Frontino 20 fitting is easy to install.

And the winner is: Eku Frontino 20!

If there were an Oscar in the industry, the Eku Frontino 20 would have won it: The premium sliding fitting has been presented with the Interzum Award 2017 – having already won awards in previous years. The jury, which consists of well-known designers and architects from all over the world, was persuaded by the sophisticated sliding solution for flush-fitted sideboards and highboards and kitchen wall units – also because the sliding fittings remain invisible on the furniture thanks to an innovative design.



Building school takes up idea from Hawa Student Award

The Hawa Student Award 2017 was looking for flexible, temporary living solutions for people in need – and also found them: More than 100 participants from Switzerland, Germany and Austria developed “temporary accommodation” for people with low income. The winning project from the competition was used by Aarau Building School in Switzerland as the basis for a dissertation. For their dissertation, the students worked intensively with a subject for two weeks. Last year was the fourth time that Hawa Sliding Solutions had presented awards to up-and-coming archi-



tects. It would also like to promote new talent in the future. The Hawa Student Award 2020 is therefore already being planned.

Flexible structures are an answer to the need for accommodation in cities.

For your agenda

Hawa Sliding Solutions is going on tour. You can experience how everyday life can be simplified with versatile cabinets, moving façades and convertible rooms at one of our trade fair appearances. What's more, you can use the opportunity to exchange ideas with specialists.

**Sicam 18**  
Pordenone, Italy  
October 16 to 19, 2018  
Hall 2, Booth A9  
[www.exposicam.it](http://www.exposicam.it)

**Bau 19**  
Munich, Germany  
January 14 to 19, 2019  
Hall C4, Booth 310  
[www.bau-muenchen.com](http://www.bau-muenchen.com)

**Interzum 19**  
Cologne, Germany  
May 21 to 24, 2019  
Hall 7.1, Booth C38  
[www.interzum.de](http://www.interzum.de)



# Employee 4.0 is a TV star

He or she looks just as charming as Eve in the film “Wall-E”. And the YuMi robot can get some work done with its two arms. Since the spring of 2018 it has been ably helping to assemble sliding door elements in the plant in Sirnach – making it possible to increase capacity. Whereas its work colleagues made from flesh and blood have long since become its friends, YuMi attracts the gaze of visitors almost magically. So much so that Swiss television devoted a short report to it. Its spokesman Peter Möller, Director factory management and logistics, is convinced: “Thanks to targeted automation, we have succeeded in developing our market position and reinforcing the production location in Switzerland”. YuMi is particularly suitable for lightweight parts. Specialist employees from Hawa Sliding Solutions define the area of application and carry out the programming.



The YuMi robot uses a camera to detect where the parts are and where it has to grip.

# AWISA 2018: Hawa Sliding Solutions scores points Down Under

Every two years the who’s who of the wood and furniture industry meets at the AWISA – the international exhibition in Sydney. When the trade fair took place from July 4 to 7, Hawa Sliding Solutions was there for the first time. And guess what: The dynamic innovations at booth 4709 attracted the attention of the professional public.



Even the experts were astounded in Australia: There is so much you can do with sliding solutions!

# Experience Center in Singapore

The time had come in September 2017: The new Experience Center of Hawa Sliding Solutions in Singapore opened its doors. Architects, designers and trade partners from the region took part in the opening ceremony – as did Heinz Haab, CEO of Hawa Sliding Solutions, and Emilija Georgieva, deputy ambassador to Switzerland in Singapore.



Opening ceremony with VIPs: Heinz Haab and Emilija Georgieva.



# Clarity in diversity

Sliding, folding sliding, pivot sliding, folding sliding, sliding and stacking: During its 50+ years of history, Hawa Sliding Solutions has developed almost every conceivable solution for challenges on façades, in rooms and in furnishings. How do you find a suitable sliding solution quickly? How do you get an overview of the product range? Simple. Hawa Sliding Solutions provides solutions at three levels: on buildings, in buildings and on furniture. To this end, it has produced an inspiration brochure with a product range overview. It presents the wide range of sliding systems and their areas of application – clearly and inspiring. Order the new brochure free of charge.





**City planner with global standing**

Dutchman Kees Christiaanse (65) is the founder of the KCAP Architects & Planners architecture and planning office. It employs more than 100 architects, city planners and landscape architects from 20 countries in Zurich, Rotterdam and Shanghai. “We are a unit with three rooms in three countries,” says Christiaanse. The recently appointed professor for architecture and urban development travels to Singapore regularly, where he was involved in the set-up and management of the Future Cities Laboratory with 75 employees for the Eidgenössische Technische Hochschule (ETH – Technical University) in Zurich.

# “The reality is more exciting than science fiction”

Urbanization is a mega-trend: Never before have cities been growing as rapidly. Urban developer and architect Kees Christiaanse tells us how we will live tomorrow. He has researched this, among other things, in the Future Cities Laboratory in Singapore for ETH Zurich.

**Professor Christiaanse, you have offices in different locations in the world, in Europe and in Asia. Which architectural buildings are the most futuristic?**

There are many! In Singapore I find the WOHA building extremely interesting from an urban development and architectural point of view. The 200 meter high “plant” has façades which are overgrown and semi-transparent. In Cupertino in California, the energy-autonomous Apple campus has a futuristic look. However, there are some issues with the 460 meter wide UFO in the landscape: It is annular – a symbol of completeness. And above all it is only accessible by car via an underground car park. The Kalkbreite Genossenschaft in Zurich is completely different. You feel like you are outdoors in the stores and restaurants on the first floor. The structure has many different uses, and a roof landscape is flourishing on top.

**At the WOHA building, the green spaces attract the attention. Are eco-utopias being realized in the skyscraper era?**

The so-called vertical gardens have a positive effect on the living climate. They can have a positive effect on the climate situation of buildings with regard to cooling and protection from the sun. However, “real” green structures are required in order to have sufficient quality. This means having a thick layer of soil and real trees. I favor urban construction structures that have developed over the years – or new structures developed from a robust basic design.





High density and mixed uses, new waterways and a lot of greenery – this is how Kees Christiaanse imagines the new Jurong Lake District in Singapore will be like.



The plan is for the district to be dominated by vertical gardens and green connections. That requires a thick layer of soil.

#### What will life be like in 2050?

Climate, economy, digitalization, ageing population, migration: What will 2050 be like? All of our expectations will probably be completely wrong.

However, as an urban planner you are helping to design the future.

We assume that there are three growth trends: worst case, the trend and that which is desirable. Then we take a look at the scenarios that could arise in ten or twenty years. We attempt to design a structure that is not too rigid so that transformations and adaptations can take place along the way.

#### Do you get your inspiration from science fiction?

No! The reality is more exciting than science fiction. 50 years ago, our biology teacher said: “There is no such thing as magic, but reality conjures up more than you can imagine”. We asked: “Why?” He said: “Nothing will be impossible in the future.” Science fiction can be ingenious, but that doesn’t help us. A compact city develops almost on its own: by the concentration of people that rub up against each other there with their interests. This often results in creative solutions.

#### What other living trends stand out?

For various reasons, introverted developments are in demand – so-called gated communities. With these cordoned-off developments, the entire safety aspect is so exaggerated that it affects all aspects of the city.



#### Name some successful examples.

The HafenCity in Hamburg is one of the biggest urban renewal projects in Europe. It has developed from existing quay walls, water basins, several existing buildings and of course mainly new buildings. With its diversity, you feel like you are in a city that has developed “naturally”. The Cantonal Structure Plan of the canton and city of Zurich in Switzerland is also exemplary. It stipulates where construction is permitted and where it is not across all municipalities. This prevents large-scale construction that is not really thought out and guarantees that there is an excellent public transport network. There is also the attractive flow of the landscape, and the outstanding quality of the water in the rivers and lakes. And the city center is only 15 minutes away from nature – on foot.

#### The city and the country are becoming noticeably condensed.

There are two contradictory urbanization models: the compact, condensed, attractive city – and the urban landscape, which is also known as “Desa Kota”. The name originates from the semi-urbanized countryside that extends across the whole of Java in Indonesia. The countryside is populated because the land prices are lower than they are in the city, and it is easy to access initially. This type of urbanization results in overloading of the transport network and “digestive problems”.

#### Such an urban landscape seems hardly attractive...

However, it will remain a reality. And this is why it requires organization from a political and design point of view. Otherwise there is a risk of gridlock, land wastage and inefficiency.

“We must learn how to design urban landscapes. Otherwise the transport system will collapse and nature will be destroyed unnecessarily.”





**In what sense?**

A building complex used to have an accessible garden. Now there is a fence around it. The garden can only be accessed by fingerprint via the electronic control.

**How do we influence developments such as this?**

As city planners we try to prevent it. That’s because transparency and permeability are important prerequisites for the quality of life of a city.

**You want pop-up zones in public places.**

Absolutely, I find that important. I call such zones “improvisation spaces”. They bring life to places.

**Where and how can these be designed?**

In the transitional zone between public space and private buildings. The building at Wasserwerkstrasse in Zurich where we have an office is a good example of this. There is a dance house, an open-air cinema and a river pool: In summer you are outside, having conversations next to people practising their dance routines. And perhaps a kiosk or a food caterer will park nearby, offering their products.

**Are there any guidelines for improvisation areas such as this?**

We say that a first floor zone must be flexible in use and have a certain degree of public sphere. We then stipulate zone widths of three or five meters in front of the house. That is where improvisation can happen with certain restrictions.

**Hot cities need permeability so that the fresh wind can blow through.**

In warm climates, you can create a double roof and leave a ventilation gap open below the top layer. Another ventilation option is to suspend the façades in front, allow ivy to grow on them and let rainwater run over it. This provides cooling and protects from the sun.

**Climate change is on everyone’s mind at the moment.**

We are working hard on finding ways in which buildings, rain-water, ventilation and cooling in different climates can be achieved in a more or less energy-neutral way. This is easier in cooler climate zones. In Singapore, cooling is two to four times more expensive than in Western Europe. Cooling uses up significantly more energy than heating.

The HafenCity has developed on the old port site in Hamburg – in accordance with the master plan of the Office Association for Architecture and Urban Planning KCSP / ASTOC.

**Can sliding solutions on façades provide additional benefits?**

Yes. Sliding double façades are very effective in buildings – and they provide additional flexibility. You can vary between the different layers and therefore have better control of the climate. This is more effective than just having one solution.

**Private and business premises are also getting smaller.**

**Do sliding solutions make sense there?**

Besides having an intelligent layout, solutions such as this help to create space and flexibility. That is due to the fact already that the space for the door leaf to pivot is no longer required.

**Your office is involved in major projects all over the world.**

**What aesthetic freedom do you have nowadays in construction?**

In general, I have noticed an increase in the possibilities in construction, but on the other hand there is standardization. Different joiners used to manufacture window frames. Nowadays they all come from the same factory. This also applies to the façade, the ceiling and simply everything. Architects are being confronted with an increasing amount of standardization. Modern software also makes it possible to make individual adaptations at the push of a button.

**There are also many different materials.**

Yes, 100 years ago wood, glass, brick and perhaps slate were available. Now even the rarest of materials can be transported between the continents.

“Sliding façades can make a contribution to a pleasant room climate.”



On the Kalkbreite site in Zurich there are no parking spaces, but there is plenty of room for community and trade instead.



# This is how the world lives

Living space is becoming scarce worldwide. At the same time, we are spending more and more of our life indoors. It therefore becomes a question of your personality as to how you design your own four walls. We have visited people all over the world in their homes.



“We only use the old cottage for sleeping.”

Bill Dorman, Goulburn, Australia



Our ancestors used to be housed cozily in secure, dimly-lit caves – something which modern historians consider to be a misconception. The stone age family travelled around in the open and made tents out of leather, and built huts from foliage. Caves had to be maintained for other purposes.

It is we who are the true “cavemen”, the protagonists of the 21<sup>st</sup> century. There are more buildings in existence than ever before. And living beings spend more time indoors than ever before. This makes considerable demands of our “cave”: It turns from being a room for providing protection into a multi-purpose room. We want to relax, communicate and work in it – and just have some peace and quiet from time to time.

Whereas our ancestors had yet to invent door hinges in order to shut themselves away, we have sliding systems. They allow us to put living and working areas to a wide range of uses. However, a journey around the globe reveals that the potential has been anything but exhausted in many places.



**Self-constructed house**  
Dorman family  
Goulburn, Australia  
3 people  
Living area of 154 square meters

## Self-made home in Australia

Our trip starts with a bang on the other side of the planet. “It was during the night of April 1, 2011 when a gas cylinder exploded in our workshop”, explains Australian Bill Dorman (60). His son Jasper (21) had been welding in the evening, and had forgotten to turn the gas tap off. This meant a major operation for the fire brigade and evacuation of the neighborhood. The huge sheet steel building was burned to the ground. A complete write-off. “It was hard to bear to begin with. But now we are glad it happened”.

Bill and his wife Jo (51) Dorman are sitting in their new house in the small town of Goulburn, south of Sydney. It is an 82 square meter room with integrated kitchen and sitting area, high entrances, and the majority of the structure is made from wood – built by Dorman himself. He is a former metalwork teacher and artist, who exhibits his iron sculptures all over the world. “The incident was the signal for us to fulfil our dream”. For decades, the family had lived in cramped conditions in a small 19<sup>th</sup> century cottage, right next to the road. “I felt isolated in the kitchen,” recalls Jo.

### Determined energy pioneer

The child carer no longer has these problems. The room in the new house is a market place for social interaction. Be it family or friends: this is where life is happening, this is where people drink, cook, eat, laugh, argue and make up. “We only use the old cottage for sleeping”, says Bill.



Focus

→ It took Bill Dorman five years to build the new house. He did everything he could himself. Every drawer, every door latch and particularly every door – “My name is Dorman, after all”. He used recycled building materials wherever possible. Energy efficiency was a decisive aspect during the planning – unusual in a country in which the majority of houses have little insulation. The artist found the idea of sliding interesting. However, sliding doors have to shut tight – even if it’s only to keep the flies out!

In Goulburn, the temperature reaches 40 degrees in the summer, and it is extremely cold in the winter. A polished concrete floor stores the heat of the sun during the day. If that is not sufficient, a few solar panels and a Tesla battery help to raise the temperature in the evening and during the night. “We spend hardly anything on power, even in mid-winter”, says Dorman. Unlike many Australians, the Dormans do not see themselves as “barbecue types”. Although they built a fireplace in the garden, they feel most at home in their large room. Or in the new workshop.

Bill Dorman emphasizes that his “shed” is a workplace. Not a place where he can “get away from the wife and have a drink”, like many Australians. The artist’s only regret is that the old workshop didn’t go up in flames sooner.

Old building in Hamburg

**Y**ou can live happily ever after, even in the congested port city of Hamburg. “Burger bar, pediatrician, supermarket – everything is just around the corner!” says Katlyn Pedroza about her apartment, enthusiastically. It doesn’t bother her that the tram runs noisily through the nearby station time and time again. She moved from the USA to Hamburg eight years ago together with her husband Marcus and one-year old Carson. It wasn’t easy to find accommodation – and it has become even more difficult in the meantime. Viewings with 40 to 50 interested parties are not unusual in the more popular districts of Hamburg.

The two Texans were delighted when they were given the nod for the apartment. They liked the idea of living centrally in the Bergedorf district. Besides Carson (9), Reilly (7) and Emery (4) have now been added to the family. Friendships with other families are easy to maintain here: You often meet them in the nearby park, the parent’s center round the corner or on the way to the baker. The charm of the turn of the century has been another positive aspect. “We don’t have old buildings like this in the USA, and we like the high ceilings and the old doors very much,” explains

Marcus. The spacious living room is also perfect. This is where life is happening: You can relax or romp on the sofas, and there’s plenty of room for craft projects and games with the children. Visitors often sit around the dining table.

Acute shortage of accommodation

The apartment coped perfectly with the new arrivals to the family. Reilly and Emery share a large room, and Carson’s room is next door. “We swapped rooms often”, says Marcus. “The small room was the nursery initially, now it is our office. The half room used to be Carson’s play room, now we have moved our bedroom there.” The marital bed fits in there perfectly. The only problem is the lack of a wall at the hallway side. Sometimes Katlyn and Marcus would have liked a sliding door here in order to have some privacy. And flexible partitioning in the living room would also be



Living in an old building  
Pedroza family  
Hamburg, Germany  
5 persons  
Living area of 110 square meters



“The high ceilings and the old doors of the old building captured our hearts!”

Katlyn Pedroza, Hamburg





**HDB apartment**  
Liwani Izzati and family  
Singapore  
7 people, 4 generations  
Living area of 150 square meters



“We often sort things out ourselves with flexible sliding walls.”  
Liwani Izzati, Singapore



remains a problem. Having your own four walls is unthinkable for the majority of people: Hamburg has the lowest proportion of property owners after Berlin. 80 percent of the apartments are rented.

## One roof in Singapore, four generations

**T**he luxury commodity of living space is also highly sought-after on the tropical island of Singapore, the finance capital of Asia. A financial magnet that is attracting more and more people all the time. Looking at it from this point of view, it is hardly surprising that Liwani Izzati (19) sometimes wishes that she had more privacy. She is studying business management at the Polytechnic, but earns her money as a singer and often performs in the evenings – she is a local celebrity.

But peace and quiet – no chance! She never has that at home, especially not on the weekend. “A dozen or more flip flops and sandals at the front door are an unmistakable indication of the number of people who come to visit,” jokes Liwani. Cousins, some of whom she doesn’t even know, relatives from Malaysia, neighbors from apartment block 15, her mother’s work colleagues and the people looking after her ailing grandmother. “My mother Nuraini’s cooking is simply irresistible,” she adds mischievously but proudly.

We imagine Singapore to be a super-modern metropolis. However, that isn’t really the case. Away from the grand boulevards and business districts, you discover residential areas which don’t really fit in with the glittering skyline: Areas such as Bedok Reservoir, where Liwani grew up. The buildings are functional, somewhat sterile and usually older, but family friendly. These are typical HDB apartments: Apartments which are on a 99 year leasehold. The abbreviation HDB stands for “Housing Development Board”, the most important state property developer on the island, which operates a kind of social housing development.

These HDB apartments are the epitome of concentrated construction. Connections to public transport, shops and shopping centers are guaranteed. Above all: Because of subsidies, they are affordable to the masses in Singapore, which is otherwise expensive.

→ practical. Then friends and grandparents would have a self-contained guest room when they come to visit. Who knows, perhaps the family could suggest this to the landlord when the next renovation is due?

A problem in Hamburg: Many of the 1.8 million inhabitants cannot afford to move, because the landlords like to raise the rent up when a new tenant is moving in. The average rent increased by almost 30 percent between 2007 and 2017.

The Hamburg Senate is building more apartments than it was ten years ago (up to 8500 annually), but the lack of accommodation





→ **Big apartments replaced by small ones**

Of course, Siti Jaria, Liwani's 79-year-old grandmother, also lives here. She bought the apartment with her late husband at the end of the 1970's. Falisaya, the great grandchild, is eighteen months old. Four generations under one roof is fairly unusual, even for Singapore, where family relationships are maintained in the typically Asian way. Liwani rolls her eyes: No, it has never been quiet in this apartment.

Isn't that normal for the Malaysians who live here, who form a minority together with the Chinese? "Yes and No", says Liwani. The apartments used to be relatively big like this one. This one is a rarity because it even has two floors. This makes living together easier. "We also sort things out ourselves with mobile partition walls".

More modern apartments are significantly smaller and have a more open design – in order to at least give the appearance of size. Anyone who wants to have additional divisions and privacy has to use sliding doors and room dividers. The trend is clear: More and more older, bigger HDB apartments such as Liwani's are being knocked down. Buildings are being constructed with up to twenty floors and a smaller layout. From the lobby on the ground floor to the hallway and the bathroom: Space is rare on Singapore's shopping mile. We can only hope that elegant use is made of it.

**Country home in the USA**

The problems are completely different in the expansive north-east of the American state of Wisconsin with its 15,000 lakes. There is plenty of land available. However, it has to be shared with bears and badgers, among other creatures. Anyone who loves the idyllic country life can still make their dream of having their own home with a huge garden come true – like the doctor family of Michael and Jodi Williams with their children Hannah, Haley, Ashley and Jacob.

They live in their wood-framed house with a covered porch in the way that is character-defining for the USA. The design of house is a throwback to European half-timbered buildings. The roof shingles as well as the façades are made from wood. "We have added an open kitchen to our main living room", explains Jodi. Flowing, generously designed transitions are popular in the USA, as are built-in wall units and walk-in closets, which make rooms look bigger.



**Country house**  
**Williams family**  
**Wisconsin, USA**  
**6 people**  
**Living area of 465 square meters**  
**3 1/2 bathrooms**

"Cooking, playing and studying all happen in a single well-lit room", says Jodi. It represents the heart of their home. Although the Williams family have plenty of room, they have fitted sliding doors to the verandah and the wall units. "This is practical if a lot of people are using the hallway." And in their house that is often the case. They like to have guests in the house – unless they are doing what they like best: Travelling.

**Construction style mirrors flexible lifestyle**

The majority of buildings in the USA have sliding doors. Perhaps it somewhat reflects the mobility of the Americans. Just like house construction, which is usually completed within a few months, often in half the time it takes in Europe, for example. A US family moves house every five years on average – because work and study require it.

That is the end of our excursion. It is the beginning of a journey of ideas – to a house with movable boundaries.



"We are pleased to have a sliding door when many people are passing through the hallway. And in our house that is often the case."

Jodi Williams, Wisconsin, USA

**Clever living area design**

**Play through scenarios**

Many lives are not as straightforward as they used to be, and life expectancy is increasing at the same time. We therefore need to arrange living space in such a way that its use can be changed when circumstances change. In this way, we can live in them comfortably for as long as possible.



**Planning multi-functionality**

As a result of digitalization, work and recreation are happening under one roof in an increasing number of cases. In these cases it is useful to design the living areas in such a way that withdrawal zones can be created as easily as possible – using sliding solutions, for example.



**Partitioning is the trend**

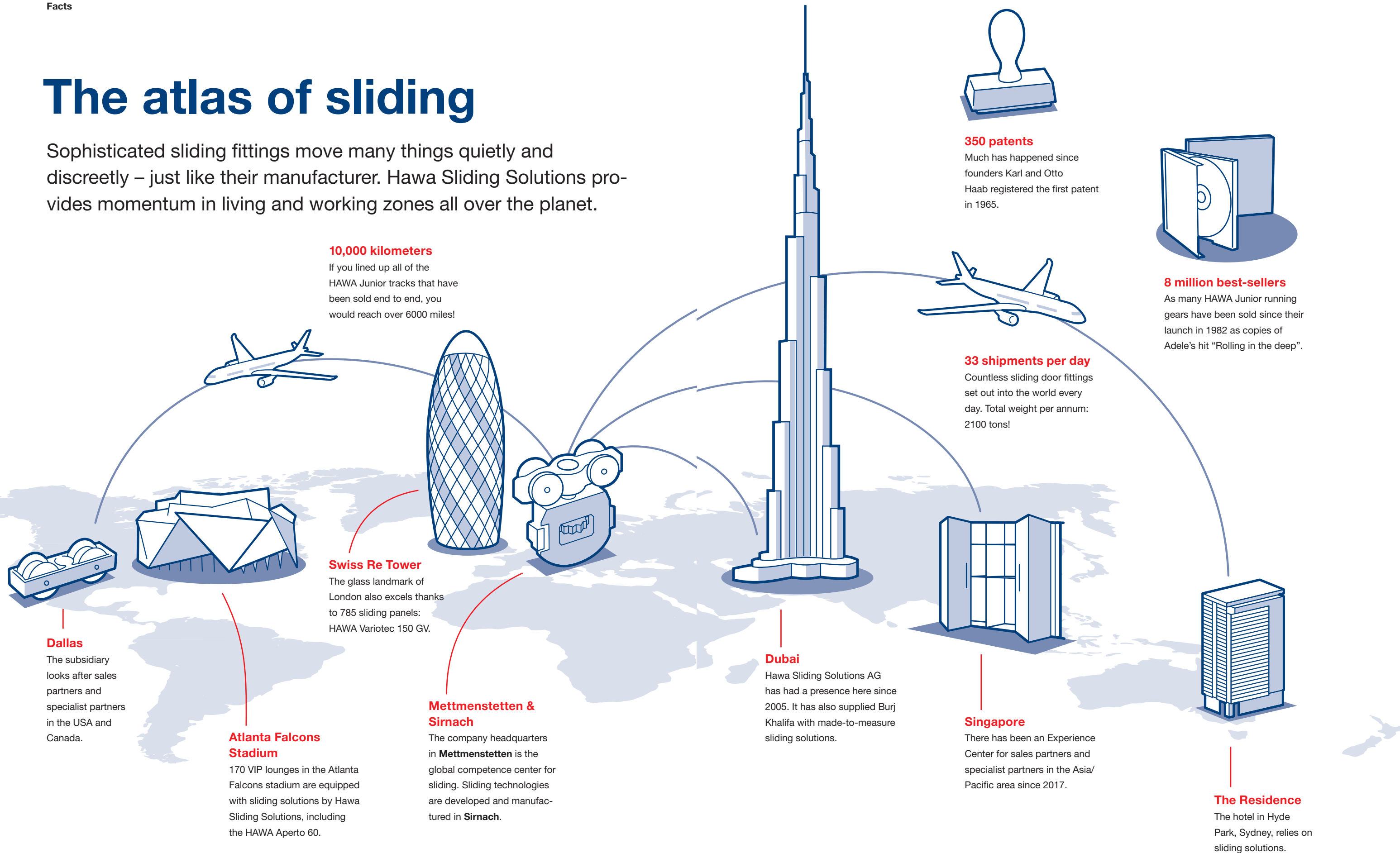
You do not always need your own office, guest room, play room or utility room. It would be conceivable to divide up the infrastructure – in an apartment block or in the district, e.g.





# The atlas of sliding

Sophisticated sliding fittings move many things quietly and discreetly – just like their manufacturer. Hawa Sliding Solutions provides momentum in living and working zones all over the planet.





# “In 10 years we will be much more well-known than we are today”

Go West, go East: The opening of the Experience Center in Singapore was a dream come true for Heinz Haab, the commercial CEO of Hawa Sliding Solutions. He explains where the challenges of internationalization lie, and why the company is on an expansion drive.

## Mr Haab, what do you have at home that slides?

Heinz Haab: For me, sliding is never the end in itself. Every sliding solution must improve the living situation. I live in a two-floor apartment. Among other things, I have four glass sliding doors, a wooden sliding door and a wardrobe with a sliding solution. All of this helps to make better use of the spacial conditions – and provides freedom of movement.

## You opened your first foreign subsidiary in 2005: in Dubai. Why was that?

When my cousin Gregor and I took over the company, we wanted to expand the business model that our fathers had drawn up. Until then, we were an industrial company that manufactured products for specialised dealers. We lacked the intensive link to specialist partners in the markets, even though we travelled abroad. The attack on the WTC on September 11, 2001 also had an effect on our company. We therefore gathered our forces before putting together our business plan, which we implemented in 2005. We wanted to be closer to the markets and customer requirements.

## Why did you choose Dubai?

We had already exhibited our products at the Big 5 show, which takes place in Dubai every year. We were working successfully with regional partners. Dubai is the biggest state in the UAE. It is not only relatively close geographically, but we are also compatible in terms of language and know-how. The Emirate of Dubai is modern and cosmopolitan.

## But the people there tick differently than they do in Switzerland.

Clearly, cultural workshops were needed in order to get a better understanding of the Arab world. But we Europeans must abandon our simplified assumptions about this region – and deal with the people and conditions on site with open eyes and open ears instead.

## 5 years later you opened a branch in Dallas. What is the significance of the market there?

It is a future market which surpasses our expectations: In North America, there are 2 national economies with a total of around

## Grown up with sliding solutions

Business economist Heinz Haab is the commercial CEO of Hawa Sliding Solutions. Since 2001 he has managed the company together with his cousin Gregor Haab, who is responsible for the technical management of the company. Their fathers Karl and Otto Haab are regarded as pioneers in sliding systems. They laid the foundation for the company in 1965.





360 million people. Many of them have spending power and appreciate quality. In India, on the other hand, there are more than 1 billion people, but they have less spending power. North America isn't new territory for us. We gained a foothold there in the 1980s via a trading partner. We have also been directly on site since 2010. But we are not taking anything away from our partners. On the contrary: We support them in order to increase their revenue with our products.

**An important step took place in the fall of 2017: You opened the Experience Center in Singapore.**  
We dreamed of expanding both towards the East and West. We have now achieved that, and it feels great! Our crew in Singapore is ambitious. We achieved our budget targets last year, and are well on the way this year.

**Why use the term “Experience Center”?**  
It is more than just a showroom. In our center in Singapore, you can not only look at solutions but experience them – regardless of whether you are interested in private apartments, commercial buildings or hotels. Everyone can experience what is possible with sliding solutions.

**You manufacture in Switzerland, in Mettmenstetten and Sirnach. Is that a selling argument?**  
Yes. Swiss values such as reliability and quality are much sought-after. Europe generally has a good image. The thing that distinguishes us is the organization of our plants. Guests visiting from abroad are often amazed: “It is so clean, you could eat off the factory floor!” A clean environment, state-of-the-art automation and qualified personnel are required in order to produce quality. The Swiss vocational training system is a trump card as far as this is concerned. However, there is yet another virtue that is appreciated: our “understatement”. We are serious creators who expect a high level of performance – and have done so for more than half a century.

**A successful duo who rely on quality and proximity to the market: CEOs Gregor and Heinz Haab have managed Hawa Sliding Solutions since 2001 and have positioned the company globally.**

**To what extent are customers prepared to pay for quality?**  
The price/performance ratio is decisive. We are not the right partner for people who only look at the price. But there are many market segments in which people are prepared to pay for quality. That’s because no one wants the annoyance of a defective sliding door or having to pay for structural defects. On the contrary, they want a sliding solution that works without problems over the long term. Our solutions perform well in full cost accounting. Regular customers say to me: “Low-cost solutions are costing me a fortune!”

**A good product is not enough – you also have to know how to make proper use of it.**  
Exactly. The best fitting isn't much use if it is installed incorrectly. If we equip a hotel, for example, we train the foremen and support the installation. It hurts us if our quality products are not used in the best possible way.

**What characterizes the old continent?**  
Europe is our domestic market. This is where we find outstanding experts with regard to architecture, joinery and technology – particularly in Switzerland. At the same time, the competition in Europe is intensive.

**The European market appears to be stagnating ...**  
We want to expand here as well. But we cannot restrict ourselves to Europe alone. We are now in a good place internationally. If a market or a Euro exchange rate collapses, we can partially compensate for this via other markets.

“We always dreamed of expanding towards the East and the West. We have now achieved it.”

“A clean environment, state-of-the-art automation and qualified personnel are required in order to produce quality.”

**Last year, Hawa and EKU became Hawa Sliding Solutions. How did the merger go?**  
We prefer to call it integration. That’s because Hawa and EKU were both profitable companies with a strong culture. The merger wasn't a money-saving exercise. If we achieve synergies, we will be able to finance our growth initiatives. That is how we have developed our presence in the Asia-Pacific area. We also want to improve our quality in all areas. I am very proud of our staff: The majority of them have contributed to the changes. A change of mentality was needed from every individual in order to create a new, market-orientated corporate culture.

**An ambitious goal ...**  
As an executive committee consisting of 7 members of the management, we met with experts in workshops over 14 months in order to shape the future culture of Hawa Sliding Solutions. You can either let a culture develop or consciously shape it – we decided on the latter. We also still manufacture in our two locations. The challenge to the management is to instil the new culture uniformly across all locations, and no longer permit the previous behavioral patterns. We have made substantial progress from a cultural point of view, and I am optimistic.

**How have the market partners reacted to the integration?**  
Many customers say: “You should have done this ages ago.” Others have encouraged us: “You are two powerful companies – the merger will work out well.”

**EKU already belonged to Hawa.**  
Many people were unaware of that, although we never made a secret of it. Hawa AG took over the company in 1992. The managing director employed at the time developed EKU in an extremely good way with innovative solutions, and multiplied the amount of revenue. EKU is extremely powerful in the furniture area.

**Please give us an example of a challenge.**  
The Falcon Stadium in Atlanta is equipped with glass boxes. When the stadium is filled with 80,000 people, every floor drops by a few millimeters. A glass wall must not be put under pressure, otherwise it will jam. We therefore developed an additional part in order to overcome the technical challenge. We must listen to the customers – and develop suitable solutions. Our strengths lie in flexibility and innovative strength.

**How do you deal with the different cultures?**  
It is not enough for the bosses to understand a country. It is important for as many employees as possible to understand other cultures. They need to have their own experiences. We take employees on trips and send them to other countries. This is the only way to generate a “sense of we”. All of the sales people operating worldwide also meet 3 times a year in Switzerland.

**What effect does this have on the locations in Switzerland?**  
We often speak English during our everyday work and gain an understanding of other regions and become more market-orientated. That is good for us!

**Do you have discussions about the design concepts?**  
Our sliding door fittings are usually concealed. But it is essential for them to be technically impressive and make solutions possible. It is also wonderful when craftspeople as well as architects get a good feeling when they handle the fittings.

“We have combined two boats into a great ship. Now we can pick up speed.”

**What do you do to make the work of architects and craftspeople easier?**  
We produce digital tools, video clips and instructions that explain our solutions. But above all we are prepared to support them on site. This is very important to many customers – despite digitalization.

**Does this apply in Miami like it does in Mettmenstetten and Sirnach?**  
It doesn't take long for craftspeople and architects from Mettmenstetten and Sirnach to come to us in the factory. However, in addition to online support, specialist partners from Miami can also count on competent people who can provide them with advice.

**Is digitalization helping with internationalization?**  
It effects all areas of our company, and helps to implement innovations in the markets promptly. It is very important to reinforce our digital expertise for all of our stakeholders.

**Where do you see Hawa Sliding Solutions in 10 years?**  
We have combined two boats into a great ship. Now we can pick up speed. We have innovations in the pipeline and are strengthening our marketing. We are still not well-known in many locations, although we would have solutions. In 10 years we will be more well-known than we are today.





# The wonderful world of convertible walls

Sliding solutions make intelligent design possible: They create free space, move boundaries and make multiple usage possible. This makes it possible to realize wonders big and small – on buildings, in buildings and on furniture! An international show.



## Filigree jacket made from cedar wood

Architect Michael Schattan has built a house that stands out on the Schlossberg mountain in Starnberg, Germany. Decorative siding shutters provide protection from the sun and the wind. They have been implemented using HAWA Frontslide matic.



## New look at the push of a button

The Hotel La Maison in the German town of Saarlouis is equipped with perforated folding sliding shutters made from sheet aluminium. The guests can conveniently open and close the automatic façades at the push of a button. The exterior appearance of the building changes with every movement. This has been made possible by the HAWA Frontego 30 matic façade fittings.





### Luxury paradise in the Alps

"The Chedi" hotel in Andermatt was presented with the award for the best holiday hotel in Switzerland in 2018. Top architect Jean-Michel Gathy from Kuala Lumpur combines Asian comfort elements with Alpine sophistication in the rooms. Space-saving passage doors with HAWA Junior and high-quality built-in cabinets with HAWA Concepta provide smooth comfort.

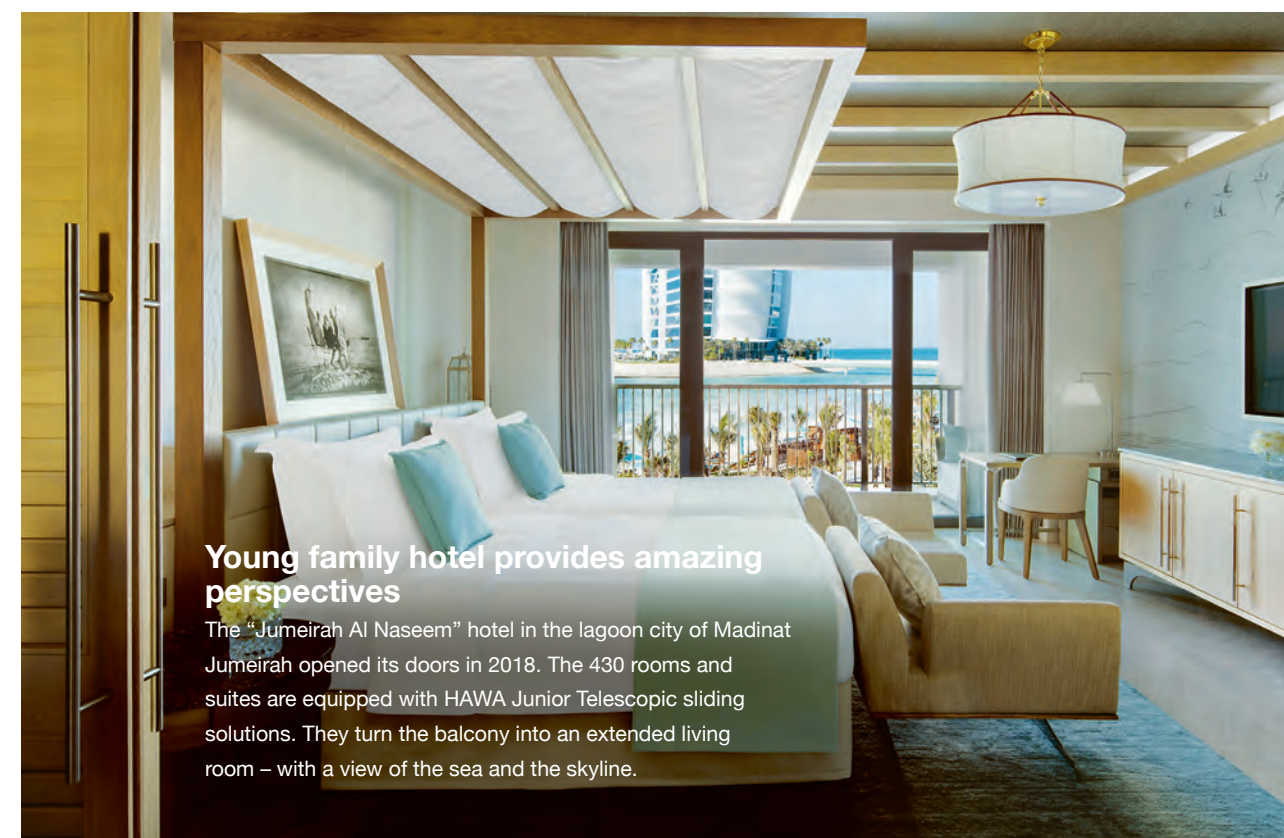


### Transparency in the office for bright minds

The creative people at the Kapero company in Stockholm come up with ideas in this office. The rooms are suffused with light, and are dominated by bright colours and simple design. In order to create quiet zones in a small space, the architects at N59 decided on yellow glass sliding doors with the HAWA Junior 80 GP sliding system.

### Business lounge for architecture enthusiasts

The Vitra Campus on the outskirts of the small German town of Weil am Rhein attracts architecture enthusiasts from near and far. In this business lounge in the center of the plant site, the cloakroom and the kitchenette are discreetly concealed behind a 15 meter long wooden sliding wall. Planned by well-known architect office Herzog & de Meuron, implemented with HAWA Aperto.



### Young family hotel provides amazing perspectives

The "Jumeirah Al Naseem" hotel in the lagoon city of Madinat Jumeirah opened its doors in 2018. The 430 rooms and suites are equipped with HAWA Junior Telescopic sliding solutions. They turn the balcony into an extended living room – with a view of the sea and the skyline.





**A symbiosis of opposites**

Stone, glass, wood – room and nature blend into one in the loft 24/7. Architect Fernanda Marques created it for the CasaCor exhibition in São Paulo. The living room wall is harmoniously presented and conveniently flexible at the same time. The solution behind it: EKU Regal B 25 X-H FS.

**Clear structure in the private spa**

Furniture helps to bring quietness into the room. A sliding door cabinet can be transformed into discreet shelving with the EKU Clipo 26 H Mixslide. The bathroom becomes a retreat.



# Tool box

Sliding, folding sliding, pivot sliding, folding sliding, sliding and stacking: Increasing numbers of architects, joiners/ cabinet makers and designers are putting their faith in sliding door fittings. We show how they can be easily used to change the environment.



HAWA Concepta: The space trick with the charm of 007	36
EKU Clipo: When the “Magic Table effect” comes into play	40
HAWA Junior: The fitting that just keeps on rolling	44
EKU Banio: Wellness for the shower	46
EKU Frontino: Ready, steady – already fitted!	48



Hawa Concepta

# The space trick with the charm of 007



Concealment by means of clever installation: the secret wardrobe with HAWA Folding Concepta.

What does the HAWA Concepta have in common with the iPad? Both came onto the market in 2010. And whereas children can control entire computer programs by swiping using the iPad, entire rooms can be transformed as easy as you like with the HAWA Concepta by pivoting and sliding in.

Exhausted, James Bond enters his apartment. He drags himself to a wall in the living room, waves a hand – and the wall immediately disappears into a niche at the side. A secret home office appears, including minibar. Our hero regains his strength.

This scene would fit into any spy film. However, the pivot/slide-in fitting that provides this “open sesame” effect was not created in Q’s workshop on behalf of Her Majesty. No, it was developed by the tinkerers at Hawa Sliding Solutions. The intelligent fittings of the HAWA Concepta family make it possible to design rooms to be multi-functional and space-saving. Pivot, slide and fold – with the HAWA Folding Concepta 25, the home office, the minibar, the washing machine or the walk-in closet, for example, can be conjured up from out of nowhere.

The home office can be opened and closed in a flash.



Solutions for kitchens with HAWA Concepta are particularly fashionable at present. The visitors to Eurocucina 2018 in Milan also saw this at almost every turn: Many well-known manufacturers are putting their faith in the pioneering pivot/slide-in system for the kitchens of tomorrow.

## A family with outstanding talent

“Since the launch in 2010, we have continued to develop the pivot/slide-in and fold/slide-in systems”, says Gregor Haab, technical CEO of Hawa Sliding Solutions. It’s therefore hardly surprising that the HAWA Concepta family is characterized by having outstanding talent. The HAWA Concepta 25/30 gently and reliably moves wooden doors weighing up to 30 kilograms, whereas the HAWA Concepta 40/50 can effortlessly handle weights of up



Who would have thought? The hallway is also a laundry room. The HAWA Concepta makes it possible.



to 50 kilograms. The HAWA Folding Concepta 25 has additional flexibility. Two doors can be folded and parked or “spirited away” in the niche at the side, even without a center panel. Extremely attractive: Combining different versions of the HAWA Concepta family opens up an almost unlimited number of options. Space wonders with two, three and four-door fronts become reality.

#### The sophistication with the scissor technology

“The secret lies in the high-quality scissor technology with which the door is moved in the niche,” explains Gregor Haab. A sturdy upright and additional plastic lugs on runner roller profiles and the door pull-in ensure that the doors run gently into the damped end position. Easy, convenient operation is possible at all times, even with heavy doors.

#### Time saved thanks to online planning tool.

Nobody loses the plot as far as installation is concerned, either. A few positioning and concealed hinge drill holes suffice, no other processing is required. All of the components are on an intermediate panel. Even with integrated systems, fitters can therefore conveniently make all adjustments from the front – without removing parts of the furniture. And anyone who plans a HAWA Concepta solution with the online planning tool also saves half an hour of time and nerves. That’s because the digital assistant is self-explanatory. Choose an installation situation, specify the materials and the cabinet dimensions – done! The planning tool provides the right fitting within seconds, including the blueprint and the cutting dimensions:

[www.concepta.hawa.com](http://www.concepta.hawa.com)

## The latest fashion from Milan

EuroCucina 2018 presented the kitchen of tomorrow. You can draw the boundary between cooking and living yourself.

This is taken care of by a discreet star: the HAWA Concepta.



Have the visitors had enough to eat? A pivot suffices, and the kitchen utensils disappear.

The latest trend: Natural materials in warm shades – including a stylish herb garden.



## A family for the perfect presence

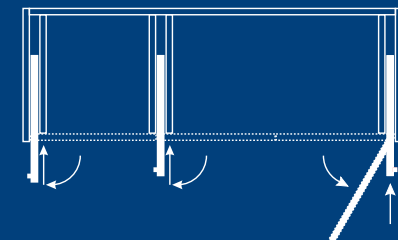
Flexible use of space is all the rage. Thankfully, the HAWA Concepta family is offering intelligent solutions. It makes multi-functional living conveniently possible.

#### Pivot and slide in

##### HAWA Concepta

This fitting is a design artist:

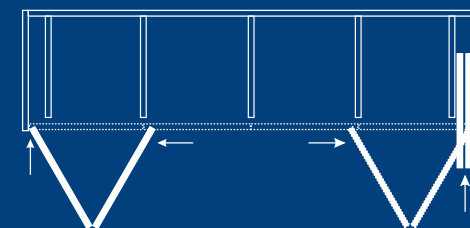
Doors can be elegantly pivoted and slid into niches in furniture and walls at the side. Room-high structures and walk-in closets can also be realized. Creating more space for living.



#### Pivot and fold

##### HAWA Folding Concepta

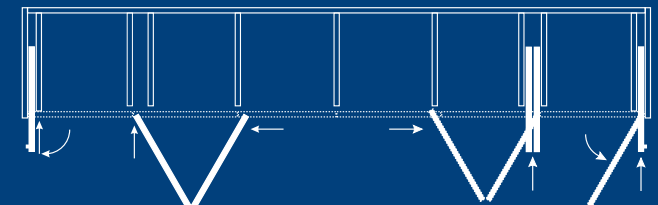
Flush-fitted cabinet fronts can be fully opened with this fitting. Two wooden doors can be folded and slid into furniture or wall niches at the side. This creates new possibilities with regard to room design.



#### Usable in combination

##### HAWA Concepta and HAWA Folding Concepta

Together they are particularly strong: The HAWA Concepta and HAWA Folding Concepta systems can be flexibly combined. This makes numerous design versions possible.



## Cabrio-chic – open for everything

You have full access in an instant with these solutions “Cabrio systems” stands for the clever sliding fittings of fully-opening and flush-fitting cabinet fronts.

[www.cabrio-systems.com](http://www.cabrio-systems.com)





# When it's time for the “Magic table” again

Cooking = cult. The kitchen is the focal point of the house – particularly if you use the Aurélie Späti kitchen system. This system was developed for the Späti Innenausbau AG by the well-known atelier oï. The EKU Clipo sliding solution creates a “magic table” effect, says designer Aurel Aebi from atelier oï enthusiastically.



Everything is always within reach:  
The kitchen work areas are organized to be able to change from one activity to the next without having to stop.

**Mr. Aebi, your kitchen won the silver medal at the Swiss Kitchen Awards. Was this a surprise?**

Aurel Aebi: Success follows when you follow yourself. But we don't want success. We want to create something good. I could imagine winning a prize, because we put a lot of energy into it.

**What is the appeal of a kitchen?**

A good kitchen lives from its materials – and from the tension between them, the delta. With a sweet and sour dish, it is not the “sweet” or “sour” aspect alone that is interesting, but the excitement that occurs in your mouth. We work like a chef who creates a harmonious dish from exquisite selected ingredients. We selected ingredients from our material archive containing 20,000 materials and composed the kitchen from those – from concrete, metal, wood, textiles and ceramics.

**The kitchen makes an harmonious impression, in spite of the many materials.**

This has to do with proportioning and weighing up – and this is also associated with cooking. The colours may be dark, but not



The guests and the host can stand around the table in this kitchen. Perforated boards in the sliding door make you curious about the inside. The EKU Clipo 16 GK fitting is used here.





black, and the wood and the contents shimmer through the doors. Whereas the tiles are shiny, the wood and the concrete are matt. The textile has a wave action that creates an interplay of light and shadows, as does the lighting with the glass rods on the tiles. Everything is orchestrated and proportioned in such a way as to create a visual equilibrium.

Which requirements have influenced your creative work?

It was a project from Späti Innenausbau AG and our atelier oi. There was an intense exchange of information. And when two parties are involved the result can be something that is at a higher level – a value that is generated from the collaboration. With the Aurélie Späti kitchen, a kind of personality emerged.

Did you have to compromise?

Compromise isn't the right expression. When you are designing something you have to take a stance. The situation is the same with garden architecture. You can't just cut a hedge a little bit. Either you let the hedge grow naturally, or it is given a defined shape by people. It's not about trial and error, but taking a stance.

“This sliding door fitting is silent and smooth – a real Roll-Royce.”

The kitchen is called Aurélie Späti...

The name arose in a workshop, from the wording. We attempt to extract the being of something, and then implement it with the correct vocation. We collaborate with architects, designers, scenographers, light designers, engineers and even a boat-builder. The kitchen is the fruit of the collaboration of all disciplines at both atelier oi and Späti Innenausbau AG.

Why did you decide on ECU Clipo?

This sliding door fitting has a “magic table” effect. The doors slide easily and quietly: The fitting is extremely filigree, almost invisible and you cannot see any grooves at the bottom. Sliding doors have been around for a long time. But this fitting, combined with the special aesthetics because of the perforation, is a real Roll-Royce.

What do you like about sliding doors?

I like sliding doors a lot because of the gesticulation. A room can be completely opened up, and there are no doors in the way. I can make the doors disappear in the design because I do not have to draw a door leaf in the room. With floor-to-ceiling sliding doors you can imagine that they aren't there - there is no frame, and the room is spacious. The area can be made 100% accessible in furniture construction. This is extremely convenient in a kitchen, because the doors can be left open during cooking. And then everything can be quietened down again in the kitchen by closing all of the doors.

Designer with a perspective

When he completed his architecture studies at the ECAL in Lausanne in 1991, Aurel Aebi (51), collaborated with fellow students Armand Louis and Patrick Reymond and established the atelier oi architecture and design studio, the name of which is derived from the Russian word “Troika”, which means “triumvirate”. By now, 35 creative people work meticulously on all kinds of items – from perfume bottles to residential buildings. They always work in an interdisciplinary way.

www.atelier-oi.ch

Clip-on system with style



- 1

**Beautiful**  
The ECU Clipo sliding door fitting is characterized by filigree and sophisticated design – for over 20 years.
- 2

**Practical**  
Clipo stands for the practical clip-on system, which makes installation child's play.
- 3

**Flexible**  
Thanks to the height adjustment, the position of the doors is extremely easy and safe to adjust.
- 4

**Simple**  
Since ECU Clipo does not require a groove in the base and a panel, the appearance is simple and elegant.
- 5

**Durable**  
Once it is installed, the ECU Clipo fitting remains maintenance-free. And thanks to the integrated soft closing mechanism, the doors can be closed gently.
- 6

**Versatile**  
This sliding door system is suitable for wooden, glass and aluminium frame doors weighing from 15 kg to 36 kg for living, office and project areas.
- 7

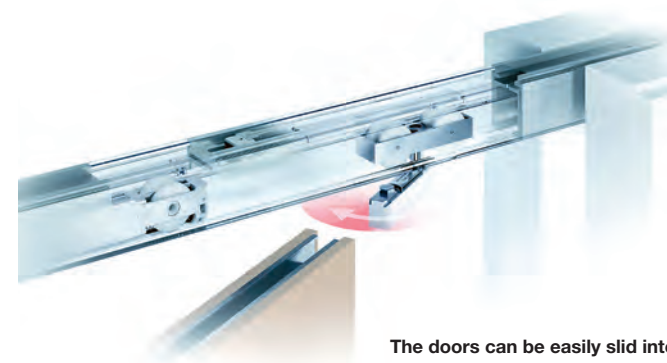
**Silent**  
The innovative ECU Comfort Roller made of high-performance plastic reduces the rolling resistance significantly and moves quietly to and fro.



Hawa Junior

# The fitting that just keeps on rolling

The HAWA Junior is the evergreen among fittings. It has been rolling along the tracks since 1982. It is as easy to fit as it is to slide. And since the new HAWA Junior 80 B Pocket sliding fitting made an appearance in 2017, this has also applied to wall pockets.



The doors can be easily slid into the wall pocket because the pivot point of the suspension is directly at the edge of the door during installation.

The first guests arrive, and the party in the lounge can start. Just one detail is missing: Quickly push the sliding door into the wall pocket, and the view of the lavish dinner buffet is revealed.

The HAWA Junior sliding door fitting allows you to make flexible use of rooms. It never stops, not even in the factory. That's because the tinkers at Hawa Sliding Solutions never stop and carry on developing it – which has been going on since the first HAWA Junior left the workshop about 35 years ago.

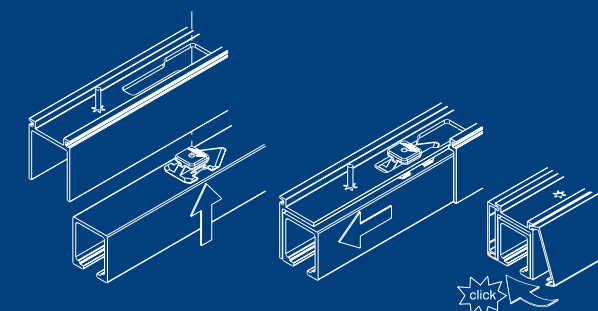
The HAWA Junior 80 B Pocket, which moves door weighing up to 80 kilograms, is extremely practical. The name says it all. Pocket stands for the wall pocket in which the sliding door is stored away. The HAWA Junior is also maintenance-free. But what if you want to replace accessories in the running track or make additions?

## Invisible, yet accessible

This was a tricky affair in the past. Since the wall pocket was fixed, it was difficult to access the running track. Nowadays, all you have to do is install a pre-assembled retainer profile when the wall pocket is being constructed. Then the running track can be inserted or removed at any time using rattle-proof bayonet locks. All of the components remain freely accessible.

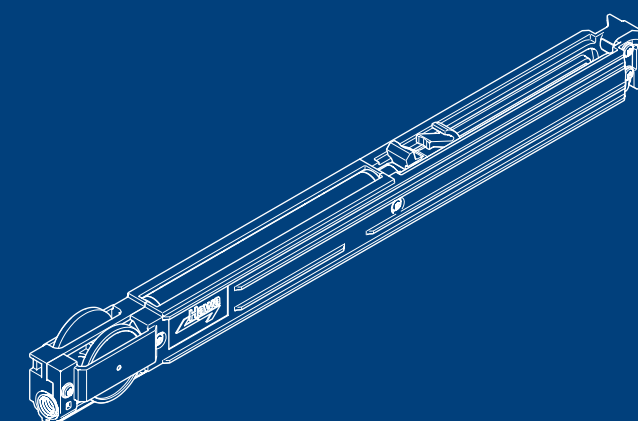
In everyday life the HAWA Junior 80 B Pocket provides ease of operation: The door slides into the wall pocket extremely smoothly. It is also visually impressive – all of the fittings remain invisible. This is beneficial when the living room is converted into a party lounge.

## HAWA Junior 40/80/120: Upgrades for more convenience and effectiveness



### Assembly set for running tracks

The new efficiency-improving assembly set for wall pockets makes the HAWA Junior 40/80/120 even more attractive for applications in wood or glass. Installation is quick and easy. The running tracks remain accessible: Additions can be made to the components at any time. Thanks to the mechanism for pushing out the doors, there are no visible components at the edge of the door. All of the fittings remain invisible because of the filigree clip-on panel.



### SoftMove soft closing mechanism

Every sliding movement is perfect with the SoftMove soft closing mechanism. The soft closing mechanism gently cushions the sliding door and pulls it to the stop position hydraulically. A top quality oil pressure damper provides freedom of movement. A new feature is that the SoftMove is now also available for doors weighing up to 40 or 120 kilograms respectively.





# Wellness for the shower

It's been a long time since the bathroom was merely regarded as the toilet. It has now turned into a oasis of well-being. Creating it doesn't take much more than a glass shower enclosure with a sliding door. The perfect technology for this is provided by the EKU Banio.

Where does the day begin and end? Usually in the bathroom – to freshen up in the morning and relax or at least clean your teeth in the evening. A harmoniously designed bathroom therefore increases your quality of life. More and more people dream of having a private wellness environment.

And this is almost unthinkable without a transparent all-glass shower enclosure. The well-being experience really achieves perfection when you don't have to yank the door open, but can gently push it open and closed. The technology for this is provided by the EKU Banio sliding solution. It can be individually adapted to the shower and cut to the required size.

Corner, niche and all-glass solutions are possible. The fittings work with shower trays and also with barrier-free entry. All versions have high-quality aluminium profiles – the guarantee of a long service life.

## Nice and neat

EKU Banio is easy to install because the tracks, panels and thresholds are supplied in a choice of three lengths. A self and soft closing mechanism is installed in the running track at both sides. And the shower remains easy to clean, even after intensive use: Swivel up the floor guide and clean the glass. Simply a pleasure!

1

## Timeless design

The sliding door fittings remain covered, and the profiles are simple. This provides transparency and elegance in the bathroom. Flush-fitting sealing profiles are also possible.



2

## Convenient installation

The solution can be made to measure with millimeter accuracy. No glass processing is required. Installation is accordingly simple.

## Practical product range

The fitting system is available for niche and corner solutions. It is available as a complete set.

3



4



## Easy to clean

The fittings are spray and leak proof. The glass can be cleaned quickly by swivelling out the sliding panel, and there are hardly any deposits due to the flush-fitting sealing profile.



EKU Frontino

# 15-minute installation: Ready, steady, go!

It all runs smoothly with the ECU Frontino 20. The fitting package for lightweight sliding doors comes pre-installed. And after a few steps, the fittings are sitting perfectly in the individual furniture item.

“The ECU Frontino 20 fitting is amazingly quick and simple to install. And then it works smoothly for an amazingly long time – for an eternity.”

Stefan Oertig, Product manager Hawa Sliding Solutions

15 minutes after unpacking the sliding fitting, Stefan Oertig has adjusted the doors to perfection.



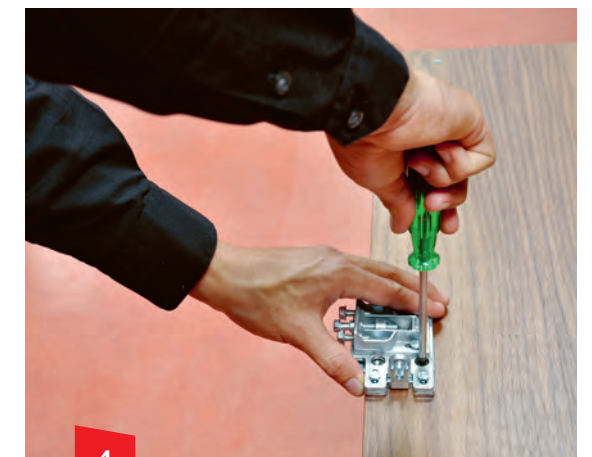
1

The mail has arrived! ECU Frontino 20 is delivered as a pre-installed fitting package.



2

Stefan Oertig screws the fixing clips to the furniture cabinet and marks the middle of the cabinet and the position of the radial cam.



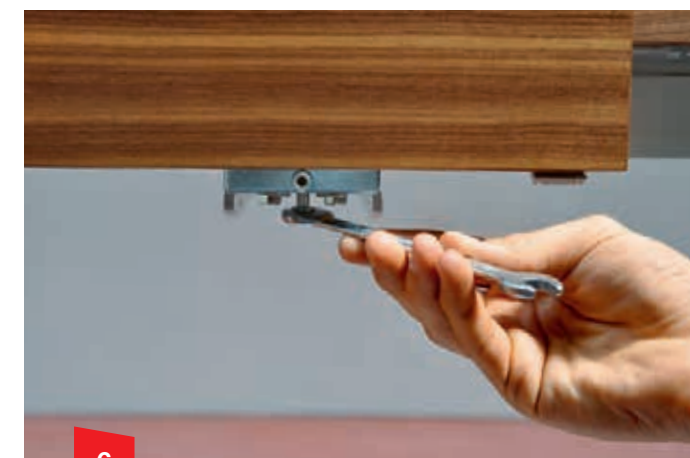
4

... he then screws the front connection to the inside of the furniture door ...



3

It's all about the know-how: The foreman clips in the pre-installed running system with ease, and attaches it to the running gear ...



6

Now all he has to do is make the three-dimensional adjustment to the doors at the front connection. Finished!



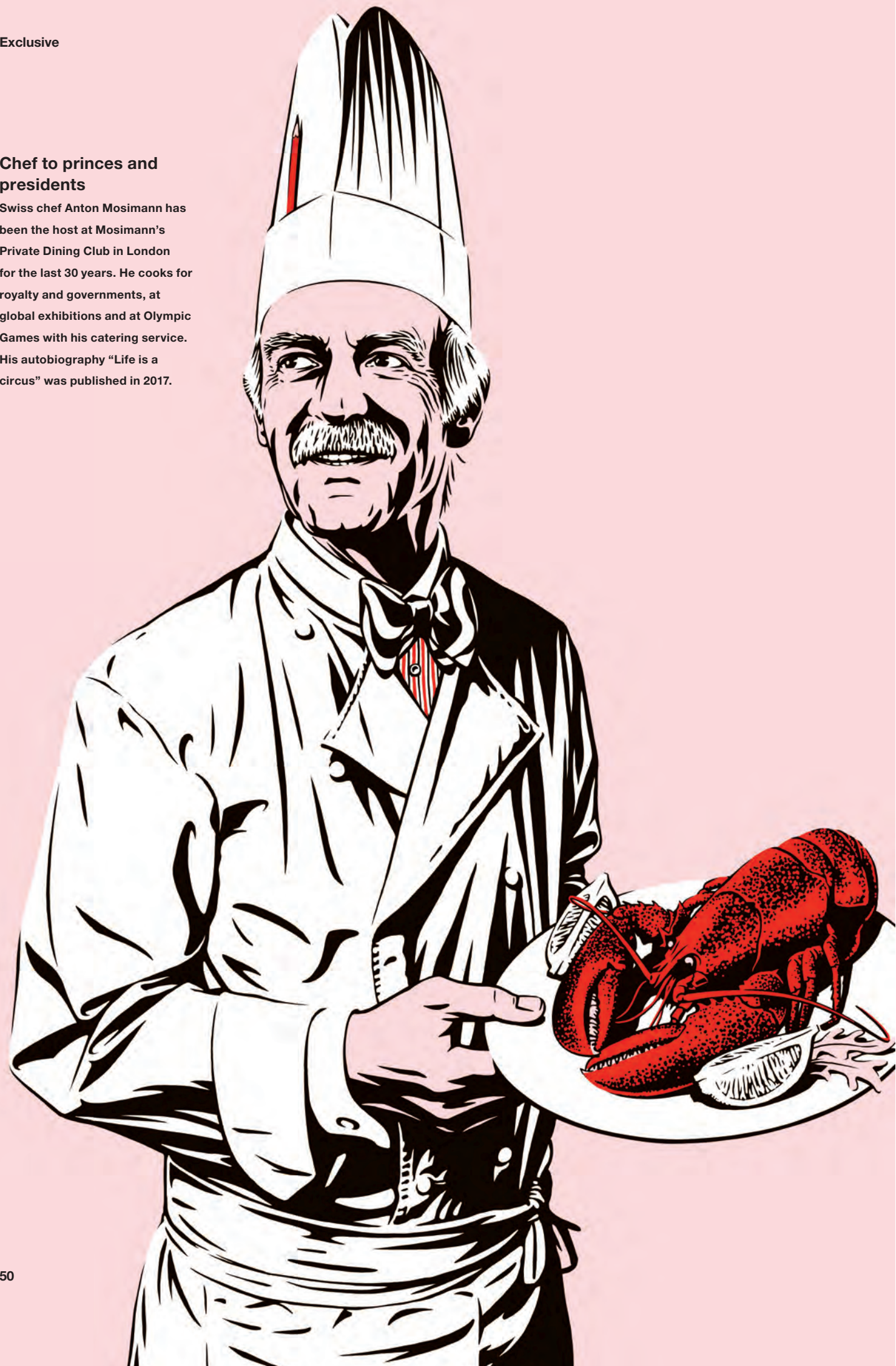
5

... and hangs the sliding door onto the fitting package. The “hard work” is already done!



Chef to princes and presidents

Swiss chef Anton Mosimann has been the host at Mosimann's Private Dining Club in London for the last 30 years. He cooks for royalty and governments, at global exhibitions and at Olympic Games with his catering service. His autobiography "Life is a circus" was published in 2017.



# Back and forth with Anton Mosimann

**Mr. Mosimann, what do you never let slide until tomorrow?**

I never put off anything that is important, and many things are important. The "mise en place" for a banquet, interview appointments, writing birthday cards, etc.

**When does time slide by for you?**

I'm always active and on the move in some way or other. I like having a lot going on. But when I'm driving, I enjoy the way time slides by.

**Would you say you're more flexible or stubborn?**

Flexible in life, but stubborn about quality. And in my recipes as well, of course.

**What gets your tears flowing?**

It doesn't take much at all to make me cry. I don't need a wedding or a funeral – seeing someone again or a moving film with a happy ending is enough.

**Where would you most like to have a sliding door?**

In a number of doorways used by my staff. However, "Mosimann's" is housed in a former church. Functionality is secondary to the architectural and historical constraints. But in such an amazing building that's something you're happy to put up with.



**SLIDE #1** September 2018 **Publisher/Copyright** Hawa Sliding Solutions AG, Sliding solutions, CH-8932 Mettmenstetten, info@hawa.com, Technical changes reserved **Responsible for project** Rolf Arnold **Concept/Editorial/Design** Basel West Unternehmenskommunikation AG, CH-4055 Basel; Project management: Thomas Aerni; Editorial: Edith Arnold, Stephan Lehmann-Maldonado, Willi Näf, Manfred Rist (NZZ), Anja Schäfer, Urs Wälterlin; Layout: Michael Aerni, Manuel Bürl, Frédéric Giger; Lithography: Sinia Brugger **Printing** werk zwei Print + Medien Konstanz GmbH **Languages/Copies** German 6500, English 5500, French 3000 **Picture credits** Page 1: iStock.com/franckreporter; pages 2, 8, 27, 28: René Lamb; page 4: Daniel Auf der Mauer; pages 5, 16–17: Urs Wälterlin; page 5: iStock.com/Nikada; page 7: Frédéric Giger, Bauschule Aarau; page 10: Markus Bertschi; pages 12–13: KCAP-SAA-Arup-S333-Lekker; page 15: Fotofrizz, Volker Schopp; pages 18–19: Katlyn Pedroza; pages 20–21: Manfred Rist (NZZ); pages 22–23: Haley Williams, Hanspeter Wagner, Paul Ott; pages 24–25: Manuel Bürl; page 31: DF-Group; page 32: Andermatt Swiss Alps AG – The Chedi Andermatt, Marc Eggimann; page 33: Peter Rutherhagen, Jumeirah Al Naseem; page 34: Florense/Alain Brugier; page 37: Arclinea; page 38: Effeti Cucine; pages 40–41: Atelier Oi; page 42: Joël von Allmen; page 50: Gregory Gilbert-Lodge **Art. No.** 789.0123.001

**Protection of trademarks/copyright** HAWA is a trademark registered in the name of Hawa Sliding Solutions AG. The names Junior, Concepta, Clipo and Frontino are product family names either registered in the name of Hawa Sliding Solutions AG, or to which Hawa Sliding Solutions AG claims exclusive rights of use in connection with its products and services. The contents of this publication, including all photographs and graphics are protected by copyright, and may not be copied, modified or otherwise used without the explicit consent of Hawa Sliding Solutions AG.



**Hawa** Folding Concepta

**Hawa** Concepta

HAWA Concepta  
HAWA Folding Concepta

**Makes doors  
disappear –  
creates space**

Pivoting –  
folding –  
sliding in

The **HAWA Concepta** and **HAWA Folding Concepta** pivot and folding/slide-in fittings make space in front of the cabinet and facilitate multiple uses of rooms. Now with even more operating convenience, new design versions and more flexible combinations.

Hawa Sliding Solutions AG, Switzerland, [www.hawa.com](http://www.hawa.com)

  
**Hawa**  
Sliding Solutions