

#2

Slide

Inspiration for architecture, design,
retail and trade



**Large floor plan,
compact building**

360° perspective on the megatrend microliving

Why a gentle push makes the world go quiet



From minimum to maximum

When children draw their dream house, it's freestanding and situated in greenery. This idyllic concept is deeply anchored within us. Yet it corresponds to reality less and less. New buildings have smaller living areas than even those built five years ago. Living space in cities is at a premium and becoming increasingly expensive. That's what's driving the trend toward very compact apartments, better known as Microliving.

This phenomenon has a positive side for architecture. Once again, it places the focus back on the discipline's essential questions: How can higher density succeed without compromising on quality of life? And what's the best way to use living space? We came across surprising answers in the context of the Hawa Student Award 2020, our competition for architecture students (page 18). As the three winning projects clearly show: less living space does not automatically mean lower quality of living.

There's another reason why we're dedicating our trade magazine, Slide #2, to Microliving. Sliding technology makes it possible to make full use of small rooms, down to the last corner nook. Moreover, sliding doors can also be multi-functional. For instance, with the HAWA Suono, we created a soundproofing solution. Find inspiration for how you can get the maximum from the minimum with sliding solutions.

Gregor Haab and Heinz Haab

CEOs Hawa Sliding Solutions

News	The most important information in brief	6
Expert	Microliving – megatrend or fashion?	10
Focus	Hawa Student Award 2020 – the winning projects	18
Strategy	Exploring the Hawa Experience Center	24
Facts	How small is “micro”?	26
Solutions	Sliding solutions for the world's most beautiful hotels	28
Tool box	Sliding guidebook for practitioners	33
Exclusive	How Rahaf Harfoush is pushing boundaries	50



10

Compact living

Flight from the city? Once upon a time. Around the globe, the masses are moving to the cities. As a result, available space is shrinking while per-square-meter prices are on the rise. No wonder that high-density living, known as microliving, is becoming popular. We asked leading architects, investors and a psychologist specializing in home living about this trend.



18

Aim high

The Hawa Student Award 2020 focused entirely on Microliving. Architect and professor András Pálffy served on the contest's jury for the third time. In an interview, he reveals why the winning project – a high rise – surprised him.

Black Beauty

The Industrial Style with black accents on the door frame is trending, says interior designer Anne-Laure Ferry Adam. Good thing that the Black Edition of the much-loved EKU Porta sliding door fitting is coming to market. This means that joiners/cabinet makers no longer have to painstakingly “refine” the tracks.

44



33

Tool box

Discover the right fittings for your ideas in our sliding guidebook.



Verdant chic for façades

Are façades bearing vertical greenery the gardens of tomorrow? That's what many researchers of the future believe. Project Drawdown, the climate research organization, demonstrates that vertical greenery not only provides a welcome oasis for the eyes in a desert of concrete, but also contributes to sustainable development. According to Drawdown studies, plants arranged on building walls consume little in the way of resources, thanks to intelligent watering systems,

while also cooling the living spaces. Moreover, edible plants can contribute to food security. Sliding solutions like the HAWA Frontslide sliding shutter system and fully automatic HAWA Frontego folding sliding shutter system even offer the ability for smart connection of greenery to sun shade elements. Automatic sliding solutions on façades can further reduce a building's energy consumption by up to 20 percent, according to Project Drawdown.

Green façades have an effect similar to air conditioning.



HAWA Suono: Three-time silent champion

The Holz trade fair focusing on wood only takes place in Basel every three years. And just three trailblazing developments make it onto the winner's podium when

Put an end to noise, odors and dust: the HAWA Suono closes the door tightly all around in no time.

the professional jury confers the Innovation Award. Yet HAWA Suono left 50 competing projects behind to win gold in the 2019 Innovation Award. In May 2019, the quiet-running star won an Interzum Award at the world's leading trade fair for furniture production and interior design in Cologne, Germany. HAWA Suono also convinced professional experts in Asia, bringing home the New Product Award at ARCHIDEX 2019, Southeast Asia's most important trade fair for architecture, interior design and building. The innovative sliding door system is soundproofed up to 39 decibels. It also keeps dust and odors out.

More on page 46

HAWA Concepta family: good planning is half the installation



Style can be reconciled with multi-functionality. The HAWA Concepta family proves it, just like a Swiss Army knife. The pivot and folding/slide-in fitting system makes it possible to conjure entire kitchen, office and living worlds from wall-mounted cabinets. As versatile as the design possibilities offered by the HAWA Concepta and HAWA Folding Concepta may be, mounting must always proceed according to the instructions. A few positioning and concealed hinge drill holes suffice. And anyone who plans

a cabinet concept with the online planning tool also saves half an hour of time. The practical digital assistant now also includes the HAWA Folding Concepta 25. In just three minutes you'll have planned your folding/slide-in fitting online. Just three steps are needed to create your customized solutions for kitchens, home offices, walk-in closets and space-saving wardrobes. It's that easy: select the application, input the dimensions and material – and your blueprint is ready.

www.planningconcepta.hawa.com

Planning made easy: You can save up to 30 minutes working time with the expanded planning tool for the HAWA Folding Concepta 25.

For your agenda

It's one thing to find out a few things about the sliding solutions from HAWA Sliding Solutions. It's another thing entirely to experience the lightness of sliding. Visit a trade fair appearance or the HAWA Experience Center in Singapore, or the showroom in Dallas or Dubai.

Fensterbau Frontale 2020

World's leading trade fair for windows, doors and façades
March 18 – 21, 2020
Nuremberg, Germany
www.frontale.de

HOLZ-HANDWERK 2020

High points for the woodworking industry
March 18 – 21, 2020
Nuremberg, Germany
www.holz-handwerk.de

SICAM 2020

International trade fair for the furniture industry
October 13 – 16, 2020
Pordenone, Italy
www.exposicam.it



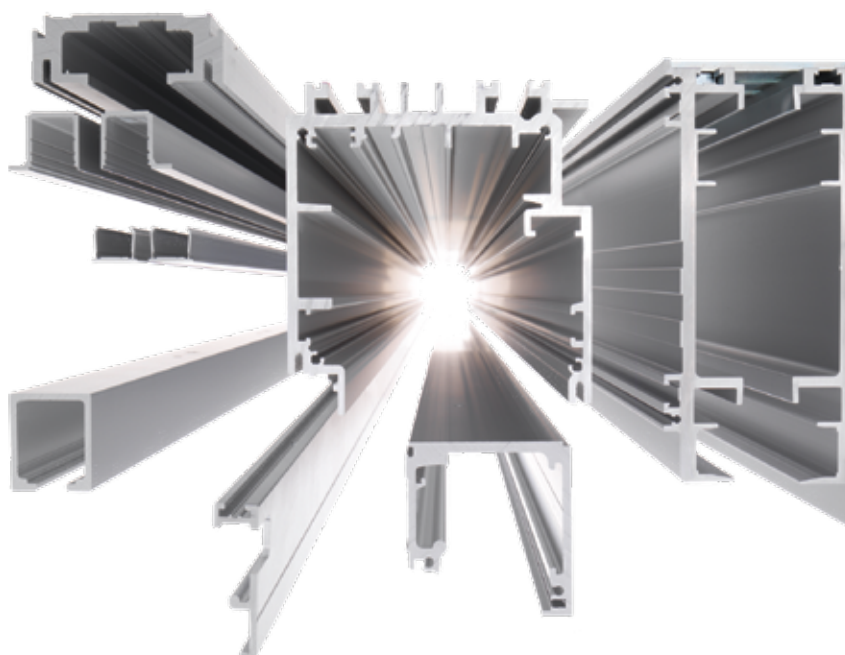
Rising elegantly with ECU Porta

Nothing can go wrong with the ECU Porta ceiling-mounted sliding door hardware – or can it? Abu Dhabi's answer to the Leaning Tower of Pisa is the Capital Gate skyscraper. Leaning 18 degrees, it has even attained the distinction of 'farthest manmade leaning building' in the Guinness Book of World Records. A lesser known fact is that inside the Hyatt hotel in the tower, ECU Porta sliding technology ensures that the glass doors in the five star hotel's rooms and suites never lose their balance. The sliding door hardware loved around the world is now newly available in an elegant black finish, for sliding doors made of wood as well as glass. With an all-black look, at least nothing can go wrong in terms of style. **More on page 48**

Swiss sliding solutions can also be found in the Capital Gate, the landmark of Abu Dhabi.

Coming soon

What runs well can run even better: even after 350 patents, research and development at HAWA Sliding Solutions refuses to come to standstill. They are always perfecting sliding solutions for use on buildings, in buildings, and on furniture. From September 2020 the new HAWA Frontfold 30 fitting system for folding sliding shutters and the new attractive HAWA Slide Lock sliding door lock will be available. Moreover, all versions of the HAWA Concepta 25/30/40/50 and HAWA Folding Concepta 25 are equipped with hinges with soft closing mechanism.



1200

kilometers

Mettmenstetten – Madrid one way

As a global technology leader, Hawa Sliding Solutions makes big moves. In 2019 alone, we delivered 1,200 kilometers of running tracks. That's approximately equivalent to the distance from our Swiss headquarters in Mettmenstetten, near Zurich, all the way to Madrid, Spain.

Or Copenhagen, Denmark. Every business day, more than 33 shipments from Hawa Sliding Solutions "Made in Mettmenstetten and Sirmach" make their way around the world. The shipments are destined for every continent; almost 90 countries. That requires 30,000 delivery notes per year. The shipments each weigh in at 2,100 tons – as much as 350 adult male African elephants.



Sliding systems make furniture versatile: Slideboard from IGN.Design.

Slideboard instead of sideboard

"Neue Räume", an international interior design exhibition celebrated its tenth edition in Zurich at the end of 2019. Among the many designers who enrich daily living with their astounding solutions is IGN, which stood out with their solid wood furniture: "We transformed the sideboard into the slideboard," explains

Robert Felderer, an Executive for Technology and Product Development at IGN.Design.AG. The Slideboard can be used as a design element for the most versatile purposes. The EKU Clipo 16 IS/FS fitting forms the heart of the sliding mechanism, after the company had already experimented with other fittings from Hawa Sliding Solutions. "The metal front of our Slideboard can glide across the wooden front. The thin body, just 3 or

5 millimeters for the bluish-rolled metal or painted aluminum, respectively, hangs on an invisible track. It can be moved along with ease using your thumb, without any jolting at all – up to this soft stopper," Felderer explains enthusiastically. For almost 100 years, Swiss company Müller Sempach AG has been producing timeless furniture pieces for home living and office – and for 10 years under the IGN product line.



Small yet refined

The world's population is growing. And in cities, the density is only rising. In response, the microliving movement attempts to make good use of every square meter – in keeping with the motto: “less is more.” We listened to what the leading figures of this movement had to say.



aVOID

Getting by with little is architect Leonardo Di Chiara's *modus operandi*. He spent three months working on building his first house, called "aVOID."

Area: 9 square meters

Site: Flexible, since it's equipped with wheels

Year of construction: 2017

A

s a young boy Leonardo Di Chiara was amazed at how much his parents could stow inside their sailboat. "I had two dreams," says the architect, "to be independent and to travel."

He's long since accomplished both: Di Chiara tours through Europe with a house on wheels that he calls "aVOID" and presents it at architecture and furniture trade fairs.



No matter how small the home: people want to lend it personal design touches.

Dr. Sonja Friedrich-Killinger,
psychotherapist, Ludwigsburg

"aVOID" is an entire program. The name riffs on the dual meanings of empty expanse, i.e. "void" and "to prevent," i.e. "avoid". To realize his goal of living in a 9 square meter space – and even inviting guests over – the young Italian opened his mind to all possibilities. Inside, chairs and tables fold down out of the wall, drawers roll out on tracks and the foldaway bed transforms into a double bed thanks to a magic folding trick. Di Chiara turns, rolls and pushes, conjuring a ladder out of the wall to climb up onto the roof patio and pushing the open doors of the cabinet inside. He's selected the HAWA Folding Concepta 25 sliding solution for the kitchen doors. The entire furnishing setup is typical of a "Tiny House": a micro house with all the essentials, on a tiny footprint. "The less you have, the freer you are. This attitude extends far beyond just living," explains Di Chiara. To spark enthusiasm among wider circles, he founded a "Tiny House University" in Italy.



→ **From environmental idealists to large investors**

Increasing numbers of inventors, scientists and alternative living types from around the world are joining the Tiny House community. Most of them roll up their own sleeves to build their compact living paradise – and keep the community updated with their construction progress. They compare notes on the internet and at festivals regarding floor plans, camper vans and furniture. And they celebrate “independent living in nature.”

But what being as an idealistic movement of private citizens is now been discovered by city planners, architects and investors. “Microliving” is their term of choice for living in a compact space. “In light of the sealing of land, higher density living is a must,” says US architect David Baker, founder of the eponymous architecture firm in San Francisco. In fact, after growing steadily since the 1970s, in many industrialized countries, the average living space in new buildings has again started to shrink in recent years. The specific floor area in square meters that is considered “microliving” depends on the local circumstances. “The higher our living density, the smaller our environmental footprint becomes,” theorizes Baker, who has designed a pioneering microliving development. Residents automatically accumulate fewer consumer goods. But less space does not mean lower quality of living – on the contrary, asserts Baker: “Higher density co-living makes it possible to set up sophisticated infrastructure and take advantage of it collectively.” Higher density developments can also include guest rooms, commercial spaces and cultural institutions for all – at affordable prices.

“Farm house” with six stories

Asia is experiencing the greatest pressure toward microliving. Every week, a million people here move to the cities. City planners are favouring gigantic residential towers with miniature apartments. Forty-three percent of apartments built in Hong Kong in 2018 were smaller than 40 square meters. “Due to the limited living areas and high population numbers, we have no other choice than to build in high density,” explains Singapore’s veteran chief city planner, Dr. Thai-Ker Liu. In past decades, he designed 50 new cities in China. The scale there is vastly different: in the megacity of Shenzhen in the Pearl River Delta, city districts with 20-story residential towers are considered a “village.” Buildings with just six stories, such as those in the “Huanggang Village” district, are known locally as “farm houses.”

In the US, Australia and Europe, very few people want to live packed so tightly together. For Frankfurt architect Stefan Forster, one thing is clear: “Very few people will voluntarily live in the equivalent of a rabbit cage.” European living culture is still bound up with prosperity and prestige. “A micro-apartment is usually a temporary solution.



Living in a compact space doesn't mean compromising on quality of life.

David Baker, David Baker Architects, San Francisco



388 Fulton

Architect David Baker says of San Francisco's "first marketable" microliving project that it will contain more than 69 residential units, including 35 studio apartments. There aren't any parking spots for residents, although bike racks with room for 86 bikes are provided.

Area: 30 square meters (studio)

Location: San Francisco

Year of construction: 2016

Expert

Gradient Space

In this bachelor apartment, Metre Architects have combined the most important elements - bed, sofa, desk and table - into a compact sculpture of living that offers generous storage space.

Area: 43 square meters

Location: Singapore

Year of construction: 2018



More people are living in smaller spaces. We have no choice: high-density construction is a must.

**Dr. Thai-Ker Liu, long-time
Chief City Planner of Singapore**



The people living there are working to ensure that they get out of it again at some point.” Yet the current trend in construction is to build in a space and resource conserving manner. Forster considers sliding doors an elegant solution: “I love sliding doors because they don't project into the room and take up space that could be used for furniture. And they can be left half open to enable communication between the rooms.”

High standards for a small space

No matter how small spaces get, they have to meet two opposing demands: for security and privacy, on the one hand, and social contact, on the other. Dr. Sonja Friedrich-Killinger, a psychologist and psychotherapist specializing in issues relating to homes and living, emphasizes this challenge. It's advantageous, she says, when light suffuses the apartment through large windows and the view outside conveys an expansive feeling. “Nature is always changing and offers ideal sensory stimulation.”

Mini-one

We don't need more; but not any less, either: The mini house by architect Rainer Borchering is designed for one to two occupants. Toilet, sink, shower, kitchen, cabinet, sofa (bed) – there's just one of everything. Yet two sliding doors with ECU Frontino elegantly close flush to form a wall while opening up the room.

Area: From 28 square meters **Site:** Flexible **Year of construction:** 2019



We live in an era of personalization. Many people are looking for a temporary living solution.

**Manuel Gamper, CEO
of City Pop AG**



Studies show that patients in hospitals recover more quickly if their room offers a view of greenery. For developments with micro-apartments, Friedrich-Killinger recommends semi-public areas in which the residents can find reprieve from their compact apartments and mingle with others if they so choose. "Laundry rooms and sterile hallways just won't do. A shared kitchen and café niche are much more effective solutions." Even furnished rental apartments need customizable areas: "People have a need to personalize their living space. Apartments set up in a purely functional manner have a depressing effect over the long-term," says Friedrich-Killinger: "Every micro-apartment must offer space for a plant or picture."

Large investors that take such aspects into account need not engage in extended advertising for their microliving construction projects. "There's high demand for small living units, as long as their centrally situated. Our 50 newly built micro-apartments in Zurich were all rented within just a few weeks," discloses Manuel

Gamper, CEO of City Pop AG. Artisa, its parent company, builds Swiss residential buildings with 1,000 micro-apartments, each 25 to 35 square meters. They are conceived as limited-term rental apartments. One enters the bathroom through a soundproofed sliding door; using a hydraulic lever, the bed can be folded down out of the wall, then extended over the sofa. If the storage space in the apartment is not sufficient, the residents can additionally rent a storage locker.

Apartment seekers of all stripes

Who lives in micro-apartments like these? "Many business people and expats, but also people who have separated from their partner and urgently need a new living solution," says Gamper: "Others come as students or want to live in the city center following retirement." Artisa is planning 15,000 micro apartments in five additional countries. One has to wonder if the mobile "aVOID" dwelling will eventually be market-ready.

Trying out a flexible home

Architect and professor Elli Mosayebi designed a small apartment in which even permanent components are movable. She's having the convertible apartment in Zurich evaluated by test residents over a one-year period.

You created what you call a “performative apartment” in Zurich. What’s the idea behind it?

In the city of Zurich, half of all households are single person households. A similar picture is emerging in other cities as well. Today pluralism reigns when it comes to forms of living. Apartment construction, however, is still oriented to the idea of a petty bourgeois family apartment. Most single apartments are merely shrunken down versions of floor plans used in the apartments of earlier times. The idea was to build small apartments that were as flexible as possible, which could be adapted to the individual and changing needs of the residents – depending on their mood and phase of life. In this sense, “performative” means adaptable and convertible.

How do you create this convertible quality?

When it comes to modifying living spaces, there's a certain inertia factor. In our apartment prototype, we designed the performative elements to be easily movable and invite residents to want to modify their space. They're intended to make residents want to change around their apartment, and enable movement, dance and choreography.

What exactly are the convertible elements?

The rooms in the performative apartment are not predefined. The apartment is rather a sort of hall that can be flexibly arranged. So we've installed a revolving wall, a revolving cabinet and pivoting lamps. A platform at the window conceals drawers and storage space while inviting to various uses. Little of one's own furniture is required. To motivate the test residents to rearrange

the movable design elements, the latter can be moved without much force and are equipped with handles and brackets that invite users to grab hold of them.

What sorts of flexible room uses can be achieved with them?

The movable elements can be used to create a separate sleeping area or private personal area when guests are staying over. The kitchen can be merged with the living space as an open concept, or divided off – when it appears too unkempt, for example. Small apartments often don't offer any private personal space. Ours does, thanks to revolving walls.

How do you assess whether the performative apartment concept will prove successful in practice?

Starting August 1, 2019, a series of test residents moved into our “mock up” to try it out for a week. Angle of rotation sensors allow us to detect how often and in what ways they rearrange the elements to change the room layout. In addition, the test residents record in writing what they liked about the performative elements.

Will the performative apartment find its way into real-world apartment construction?

Yes. With an investor we're planning a building for a central location in Zurich – featuring compact convertible apartments ranging from 20 to 50 square meters. Our test residents' experience with the performative apartment and the performance of the technical elements will inform the construction and design of these apartments.



Flexible floor plans

Professor of architecture Elli Mosayebi experiments with a new type of apartment; one that can be modified as needed: the convertible or “performative” apartment. The apartment with movable walls and cabinets by Elli Mosayebi stands on the roof of a building at the Swiss Federal Institute of Technology in Zurich. Week after week, new people move into the black-clad wooden structure and record their experiences.



Architect with foresight

Elli Mosayebi is co-founder of the architectural firm EMI in Zurich. She began teaching as Professor of Architecture and Design at the Swiss Federal Institute of Technology, Zurich in 2018. Previously she taught at Darmstadt Technical University.





City planner

András Pálffy, born in Budapest, is a professor at Vienna Technical University and Chair of the Institute for Architecture and Design. He served as President of the Vienna Se-
cession association of fine artists from 2007 to 2013. He has maintained an architectural practice with Christian Jabornegg in Vienna since 1988.

“The winning project creates free space within the city”

Architecture students submitted 36 projects for microliving apartments in the Hawa Student Award 2020 competition. Jury President András Pálffy explains what the challenges were – and how the winning project foiled expectations.



Among architecture students in Switzerland, Germany and Austria, few awards are as coveted as the Hawa Student Award. Microliving was the central theme of the 2020 competition. The fictional building projects were situated at the approx. 7,000 square meter big area of the bus station in Zurich, Switzerland. The contest sought convincing solutions for a residential apartment building with 250 to 300 small apartments, including spaces for common use, such as relaxing areas and coworking spaces. The existing bus station had to be harmoniously integrated into the project.

Mr. Pálffy, you’ve been working as an architect and professor for over 30 years. How have the demands of living changed in the urban environment over this time?

Thirty years ago there were significantly more properties available for constructing buildings on. The cost pressure affecting residential construction was lower than it is today. Back then, the challenges we faced in residential construction were less than in today's growth phase. The high demand for living space in urban centers has imposed design restrictions and places economic pressure on the planning of apartments to ensure they remain affordable. Today apartments must satisfy demanding requirements: they must give inhabitants the greatest possible versatility and spatial availability within a compact floor plan. It's also interesting to note the fact that due to shrinking personal living space and increasing building density, public outdoor spaces are gaining in importance and undergoing improvements. The prevailing conception of living quality is also expanding to include outdoor spaces.





A large apartment was long considered a status symbol. But now younger people are increasingly accepting less living space in favor of a central location. Is this a countertrend?

This impression is misleading. It overlooks the family phase of life, which still exists for the majority of people today. For this reason I believe that people tend to live in small, centrally located apartments for two reasons. On the one hand, they do so during the life phase in which one has only minimal requirements for their living environment. During this time, people lay the economic foundation that will later enable them to move into a higher-quality living environment. On the other hand, increasing numbers of people live in both the city as well as in the country. They spent two to three days a week in the city for occupational reasons and would rather not stay at a hotel during these periods. They therefore rent a small apartment that enables at least a modicum of individuality. Such people spend the rest of the week at their principal place of residence in the country, where they can afford significantly more living space. In my opinion, this model is currently becoming a trend and is supported by effective public transportation connections.

“Many people have two residences: one in the city and a larger one in the country.”

What place will microliving have in the European cities of the future?

The cities of Europe are all very different. In the future, microliving will play an important role wherever land is in short supply. In such places, available apartments are rare and expensive. The market has to create offerings that cater accordingly.

In terms of planning, what specific requirements apply to the minimized apartments?

One particular challenge consists in offering, within a very small area, a living environment that can be changed around and respond again and again to new spatial desires.

This adaptability can be achieved by using flexible floor plans and movable elements. Is there a hierarchy here?

My position is clear: no matter what type of residential building one builds, quality is always determined by the maximum availability of the space. Therefore no area can be wasted and

the rooms should be able to fulfill several different functions. If the living area is small, as an architect one really has to consider how this quality can be achieved. Room elements that support versatile uses can also play a role here.

You served as jury president for this year's Hawa Student Awards. How significant for the students are architecture competitions sponsored by companies?

First of all, the students are inspired by the challenge of dealing with an exciting topic and naturally also the prospect of winning the prize money. Moreover participation in the contest may help with a subsequent employment application.

What's your motivation for serving on the award jury again, for a total of three times?

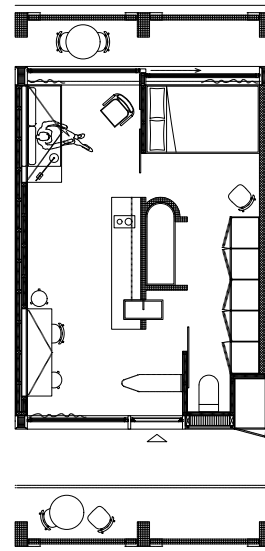
Although it may sound sentimental: on the one hand, it's my affection for the products of Hawa Sliding Solutions, which I've known and loved since my student days. On the other hand, the connection between the people at Hawa Sliding Solutions and me has grown over the years. We have great respect for one another.

The Hawa Student Award 2020 asked the students to design solutions for a microliving project right in the heart of Zurich. What were the greatest challenges?

The creative tension between the objective of creating optimized living forms, on the one hand, and creating an appropriate solution for the built urban environment, on the other, was difficult to manage. Contestants had to consider whether to just spatially compress the apartment itself in terms of small floor area, or whether the entire building would result in increased subsequent density in the overall context of the neighbourhood. In other words: the question about the socially tolerable density had to be answered not just for the individual apartment, but also at the macro level – from the built urban environment right down to the sleeping berth.

As a solution, the winning project proposes a slender high rise. What set this work apart?

First, the clarity and self-evident quality with which the authors arranged the bus parking areas on an open area. This solution creates a great deal of urban open space and it isn't necessary to cut down the trees on the property. Yet there is still room for a sufficient number of parking bays for the buses in the building itself, where passengers can board and unload under shelter. The high rise is also convincing. For one thing, it clearly separates the private spaces and common spaces into different volumes. For another, it is vertically subdivided into clear units that each span three stories. And finally, I like that the new building's footprint in the city is relatively small and connects to the existing structures.



1st prize

Ensemen

Author: Nathalie Birkhäuser, Roman Venzin

University: University of Applied Sciences and Arts Northwestern Switzerland FHNW

Prize award: 5,500 Francs

The parcel upon which the bus station currently stands in Zurich presented the students with tricky challenges. Today the public square forms a large open area and with its complement of trees, ensures green space in the neighbourhood; moreover, the fictional new building project had to find a way through to the small adjacent structures to the northwest. Nathalie Birkhäuser and Roman Venzin succeeded in meeting all the requirements with a clear placement of the buildings: they concentrate all uses in a slim, disc-shaped high rise as well as a two-story annex that docks onto the main building at a right angle. Both buildings stand in the southwest corner of the parcel. Therefore they keep the public square free while simultaneously making it possible to preserve most of the trees. The jury was convinced not only by

the positioning and overall form of the buildings, but also their inner zoning as well as the design of the individual residential units. The covered boarding and unloading places for the buses as well as the infrastructure for the passengers are housed on the ground floor of the two-story annex as well as in the basement of the high rise. The story above this houses the spaces to be used in common by the building residents. The 264 residential units, of which 198 have just one and 66 have two rooms, are all housed in the high rise. Despite having a small area, the individual apartments offer different usage zones with high quality of living. Such as a niche with a window for the bed; a living area; a small, private balcony facing southwest and a semi-private outdoor space near the arcade on the northeast side.



2nd prize

ZCP-Galeriewohnen am Zürcher Carpark

Author: Christian Bischoff, Jonas Trittman

University: Leibniz University Hanover

Prize award: 4,500 Francs

A square multi-use foyer forms the heart of Christian Bischoff and Jonas Trittman's project – a 35 by 35 meter covered urban space. Aside from serving as a waiting area for bus passengers, it also functions as a marketplace or exhibition space. The multi-use foyer is bounded on the northwest and northeast side by two L-shaped residential towers with 11 and 19 stories, respectively. They are connected by a common access tower located between the two parts of the building. The boarding and unloading zones for the bus passengers can be sealed off with large folding gates and are located on the ground floor of the shorter residential tower. Within the building, sets of two stories with apartments form a unit with a commonly used winter garden, which also serves as horizontal access. The jury especially liked the project's sensible positioning of the buildings on the property and the clear separation of public and private uses.

3rd prize

Zwei

Author: Jiahui Zou, Jiaying Zhu

University: Stuttgart university

Prize award: 2,000 Francs

The proposal by Jiahui Zou and Jiaying Zhu places great value on the quality of the public outdoor spaces. They therefore arrange the bus station in the first basement, and the apartments and commonly used spaces for the building residents in a disc-shaped high rise, which stands perpendicular to the two streets that run parallel to the property. The building divides the parcel into a public square to the southeast and a green area to the northwest. A central access core in the center of the building not only connects all of the stories with one another, but also houses part of the commonly used spaces. One element that also convinced the jury was the design of the individual apartments. Thanks to a sophisticated arrangement of the bath, kitchen, living and sleeping areas in just 22 square meters of floor area, they even offer an area for residents that can be freely reconfigured.



Highly qualified jury

The 36 submissions were evaluated by a jury lead by András Pálffy, professor at the Technical University of Vienna. He was joined on the jury by Bettina Götz (University of the Arts, Berlin), Annette Spiro (Swiss Federal Institute of Technology, Zurich), Hans Gangoly (Graz University of Technology), Hermann Kaufmann (Technical University of Munich) and Dominique

Salathé (University of Applied Sciences and Arts Northwestern Switzerland). The jury received reinforcements from professional judges: Heinz Haab, CEO of Hawa Sliding Solutions, as well as Anke Deutschenbaur, the company's Project Manager for Marketing and Communication. The total prize amount disbursed for the Hawa Student Award was 12,000 Francs.

The sliding door to Asian markets

A ban on chewing gum once made Singapore the topic of every discussion. A lesser known fact is the existence of a platform in the spic-and-span tropical country that serves as inspiration for architects and designers across Asia: the Hawa Experience Center.





The convenience of sliding can be experienced firsthand at the Hawa Experience Center. Something that Stefano Mattioli (shown at left), Head of Hawa Sliding Solutions Asia and Pacific, takes great pride in.



From the window of the Hawa Experience Center, Stefano Mattioli, Head of Hawa Sliding Solutions Asia and Pacific, looks out over skyscrapers and parks resembling jungles – two elements that shape the face of Singapore. The city state has invested a great deal to bring together high density, quality of life and sustainability. It's a necessary pursuit, due to rapid population growth in the face of limited available land.

Expensive pavement

"We're here at the ideal place to present our sliding solutions in Asia," says Stefano Mattioli, who has lived in Asia for over 15 years. "Urbanization is proceeding at a blinding pace. In districts like those in Singapore, Japan and Bangkok, the price per square meter ranges from 10,000 to 20,000 euros and more. So our sliding solutions are welcome aids to promote more efficient use of space." In contrast to Europe, Asia does not have a tradition of single family houses with a garden. Instead, high rises with small units predominate.

Since opening its doors in September 2017, the Hawa Experience Center has developed into an inspiring platform for architects and designers. With its robust economy, Singapore is known as the gateway to Asia. At the same time, it's an anomaly on the continent. "Singapore is organized to perfection. And the business world operates according to Anglo-Saxon customs. This makes it easy to close business deals," says Mattioli: "The other countries have a very specific culture with ancient business customs. If you're not familiar with the local customs, you'll quickly put your foot in your mouth – so to speak."

According to Mattioli, entry thresholds to markets of advanced high-tech countries like Japan and Korea remain high.

Their ambitious standards are often difficult for foreign competitors to meet. "What's more, in many regions there's an acute lack of trained craftsmen. A system that aims to establish itself as a hardware store favourite therefore has to make installation as easy and intuitive as possible."

The sliding solutions from Hawa Sliding Solutions meet these requirements. But what happens when there's an unmet desire in room planning? "Flexibility is a must. We offer on-site technical support. And we can individually adapt our solutions," explains Mattioli: "That's important because we can't expect architects to adopt European design." On the contrary, the sliding solutions are intended to empower architects in expressing their creativity.

Demographic challenge

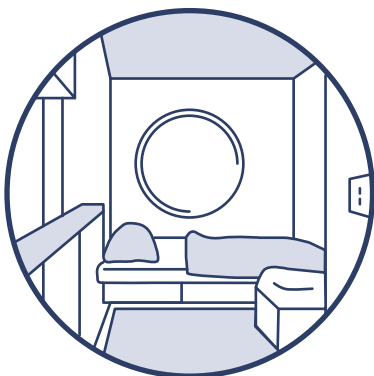
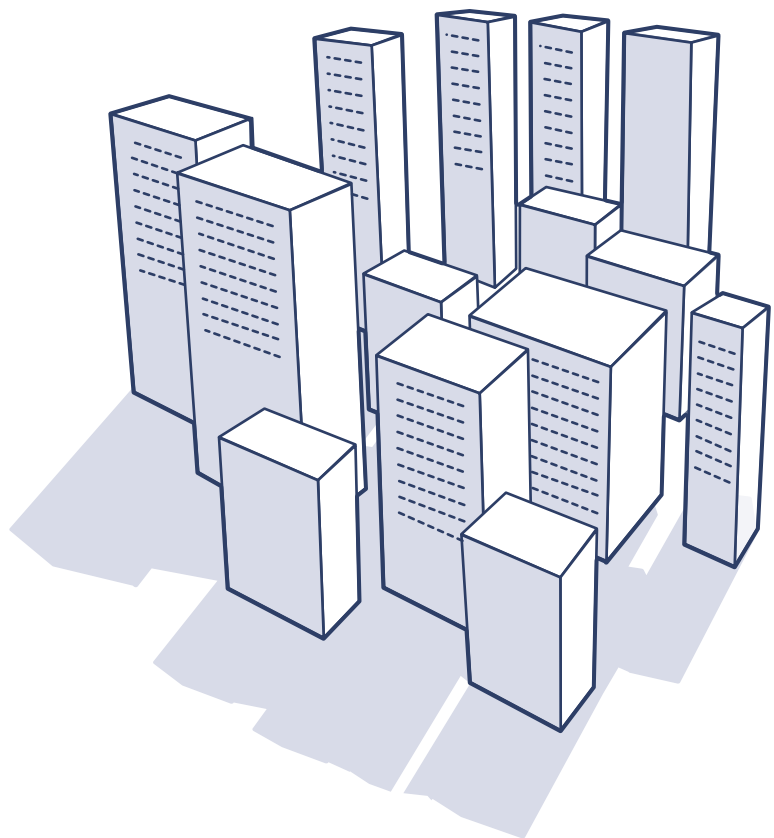
Hawa Sliding Solutions generates most of its sales in the Asia-Pacific region from major building projects. What are the areas in which sliding solutions are gradually gaining a foothold? Upscale hotels, for one, as Mattioli observes: "Five-star hotels have to convey a feeling of luxury and opulence within a small space." But the microliving and co-living trends – a type of modern apartment sharing – also play right into the hands of Hawa Sliding Solutions. At the same time, Mattioli sees a challenge. "Many countries have rapidly ageing populations. We must develop solutions that remain comfortable to operate, even as our strength begins to wane." That's why in coming years Hawa Sliding Solutions will be working more intensively with technologies that support reduced-strength movements. Mattioli gestures across the Singapore skyline at the numerous construction sites. There's still a lot to do, even in the country with the "world's best infrastructure."

Global living survey

Is our world becoming a global city? Increasing numbers of people are populating the planet and moving to the urban centers – where living space is shrinking.

Magnet megacity

In 1950, there were just two cities with more than 10 million residents: Tokyo and New York City. By 2010, there were already more than 26 megacities. Internationally, the urbanization trend continues unabated. By 2030, the world will have an estimated 43 megacities.



Just how small is “micro”

The floor area of a residential unit in the Nagakin Capsule Tower in Tokyo, built in 1972, is just 5.8 meters. Yet East Coast micro-apartments in the US range up to 46 square meters. In Switzerland, microliving is characterized by units up to 30 square meters. According to EU regulations, prison cells should be at least 6 square meters.

How much space do we need?

Average per capita living space

15 square meters: Hong Kong

20 square meters: China

22 square meters: Russia

33 square meters: United Kingdom

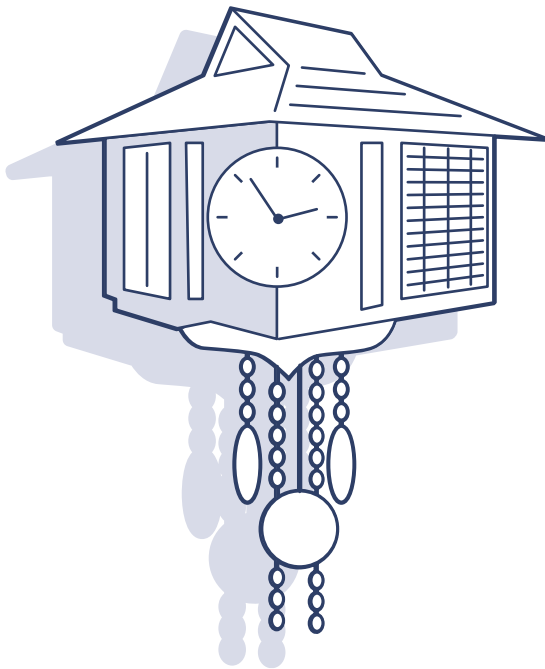
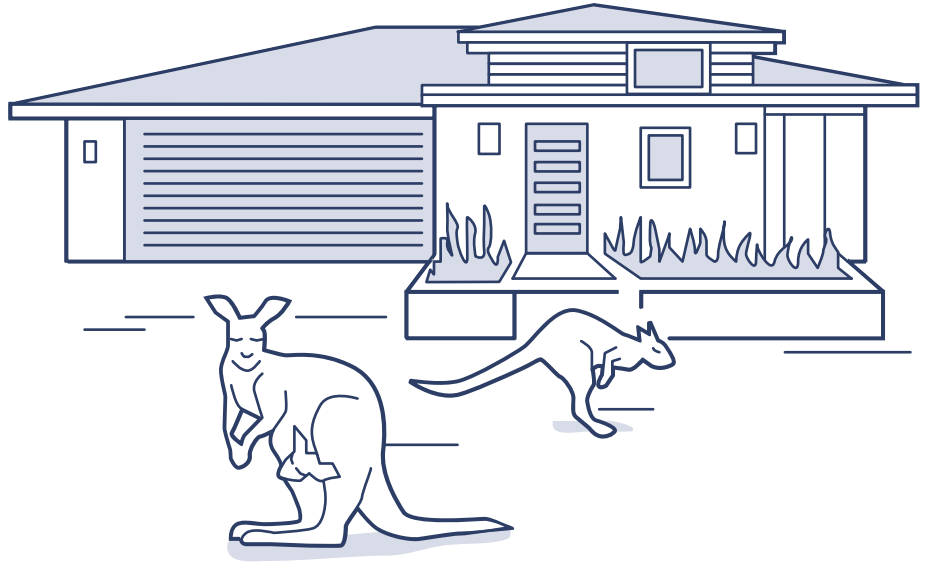
35 square meters: Japan and Spain

45 square meters: Switzerland

55 square meters: Germany

77 square meters: USA

89 square meters: Australia

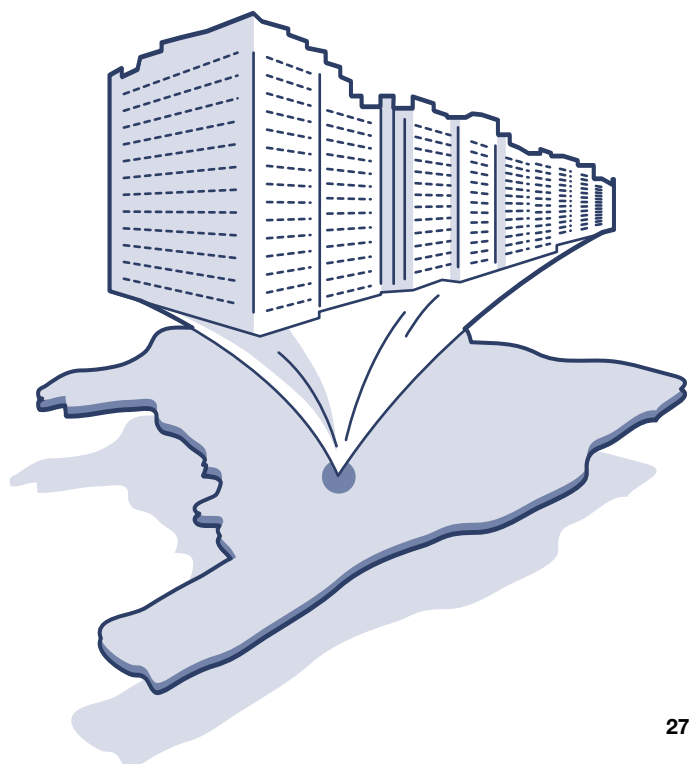


For time and eternity

The average service life of a building in Europe is 100 years. Utility lines, windows and flat roofs last for 30 years in Europe. Japanese houses are lived in for 26 years. Cars drive for 12 years. Smartphones are used for 18 months.

Housing the world in one building

All of humanity would fit inside a building with a floor area equivalent to 1339 square kilometers, including all living areas and infrastructure for absolute necessities. This singular ark would therefore be somewhat smaller than the Faroe Islands and would likely be situated in Brazil, since it has drinking water sufficient for 7.5 billion people. That's according to the calculations done by YouTube channel "Real Life Lore – Extreme Speculation."



Secure hotel living

Hotels must combine aesthetic beauty and functionality. And sliding solutions make it a reality. Guests can relax while enabling staff to do their best work. Let's take a look at the idyllic vacation spots this world has to offer.





Great momentum in and around the lodge

Guests of the Lodge Edgewood Tahoe look out to the mountains over the 18-hole golf course and crystal clear lake. The luxury hotel first opened its doors (and sliding doors) to guests in 2017; it's worth noting that 121 rooms feature sliding doors. Two years later, it was named "Best Hotel" in the US and Canada by "Preferred Hotels & Resorts".

Sliding solutions: The HAWA Junior 120 B and HAWA Junior 80 Z Symmetric sliding doors (enable simultaneous opening and closing of a two-door sliding door)

Architect: Hirsch Bedner Associates, CCY Architects

Opening: 2017





Stylish push toward the highest standards

An image that could have come from “A Thousand and One Nights”: Palm gardens, white sand beach, modern palace – the Saadiyat Rotana Resort & Villas in Abu Dhabi. In the hotel rooms, guests reside like kings. A gentle touch of a finger on the sliding doors reveals the private minibar and bathtub.

Sliding solutions: HAWA Junior 80 B sliding doors and HAWA Folding Concepta 25 pivot and folding/ slide-in doors

Architects: KCA International

Opening: 2018





Would you like another coffee?

The interior of Motel One in Cologne-Neumarkt, Germany, is a homage to the famous Cologne cathedral. The growing chain of budget design hotels relies on an effective concept for breakfast: An elegant piece of furniture with HAWA Concepta can be slid open to reveal the coffee machines.

Sliding solutions: HAWA Concepta
pivot/slide-in door

Architect: Grimbacher Nogales
Architects GmbH

Opening: 2018





Veranda to new horizons

With its modern architecture, the Veranda Resort Pattaya MGallery is situated directly on the beach in Na Jomtien, Thailand. Elegant sliding glass walls make the 145 rooms large and airy.

Sliding solutions: HAWA Junior 120 GP glass sliding doors

Architect: OBA, office of Bangkok Architects

Opening: 2016



Comfort for guests and hosts

Sliding means toppling rigid structures. That's why sliding solutions make it possible to unify high standards for design and cost-effectiveness in the hotel and gastronomic sectors under a

single roof. Hawa Sliding Solutions specializes in made-to-measure interior design solutions that are sure to satisfy both guests and hosts.

Tool box

Who isn't captivated by beautiful movements? Sliding, folding sliding, pivot/slide-in, folding/slide-in and stacking are fascinating – whether on buildings, in buildings or on furniture. And mounting is made easy thanks to sophisticated hardware. Joiners/cabinet makers reveal their best tips to us.

EKU Combino	Ten steps to the sliding cabinet	34
HAWA Suono	A gentle push – and the world goes quiet	38
EKU Porta	Setting an accent in style	40
HAWA Concepta	Masters of wood	42
EKU Banio	Bed and bath come together	46
HAWA Junior	Magic out of your (wall) pocket	48



Ten small steps to the cabinet

The newly designed EKU Combino sliding solution offers great design freedom. Mounting requires just a half-hour – when you do it like Mirco Jungblut, joiner and vocational instructor at Werder Schreinerei in Switzerland.

Simple mounting
in just a few steps:
Mirco Jungblut
shows off his
cabinet with
EKU Combino.





1

Study first, then give it a try! Mirco Jungblut goes through the parts list and installation plan.



2

What's what? It's worthwhile to gain an overview of the assembly set.



3

Know how: The master easily mounts the prepared guide track.



4

He then attaches the fittings to the inner side of the furniture door.



5

Mirco Jungblut hangs the doors with a steady hand. And presto, the trickiest part is already done!



6

Just a few easy motions: Push the guide bracket downward.



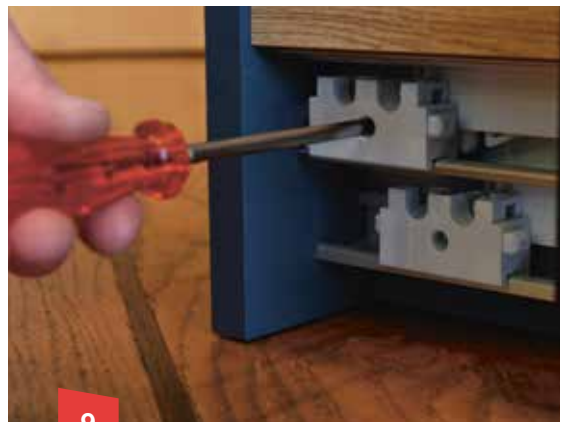
7

The refined soft closing system is quickly installed.



8

Mirco Jungblut flexibly adapts the height of the doors to a part.



9

Nevertheless, some tools are required. The stoppers allow for convenient lateral adjustment.



10

Simply practical: The door overlay can be continuously adjusted. The cabinet is finished!

One system, 16 designs

When you think of EKU Combino, you see furniture with sliding doors. Now Hawa Sliding Solutions has reinvented their award-winning premium fitting. Starting immediately, the all-rounder is offering even more weight classes and design ideas.

More creativity

With a single fitting system for wooden doors from 20 to 80 kilos, cabinets with wooden doors can be constructed with 16 different designs. Joiners and designers can instead of run, perhaps use free rein. Different sliding cabinet shapes are possible: Inslide, Mixslide, Forslide and Forslide L.



Max. 20/35/40/50/65/80 kg



Max. 19–40 mm



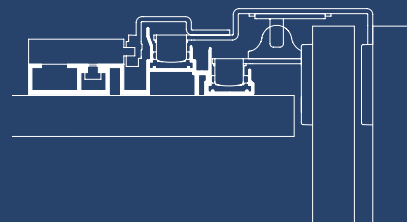
Max. 1600 mm



Max. 2800 mm

More time savings

Intelligent click connections and a high degree of pre-assembly facilitate mounting, which can be accomplished practically without tools. The cabinet itself does not require any added work. And the doors remain continuously adjustable, even once attached to the furniture.



More comfort

The secret to the ultra-quiet and easy-running sliding motion? It has to do with the geometry of the comfort rollers and in the invisibly integrated high-tech soft closing system in the running track.



The lightness of sliding is just a click away.

Discover all the possibilities you can realize with the EKU Combino. What version allows you to make your plans a reality?

www.ekucombino.com

A gentle push – and the world goes quiet

Silence is a luxury in a noisy world. HAWA Suono is synonymous with the silent revolution in room planning: The multi-functional sliding door protects better against noise, odor emissions and particulates than conventional hinged doors – and even saves space too.



Unique patented technology: the HAWA Suono enables three-dimensional sliding movement – and therefore all-round soundproofing of sliding doors.

Among professionals
HAWA Suono is garnering an
enthusiastic response and is
receiving one award after the
next (see page 7).



Our world is becoming louder. Every year noise pollution increases by a half to a whole decibel, according to findings by noise researchers. “People experience a 10-decibel increase as a doubling of the volume”, explains Dr. Joachim Hessinger, graduate physicist at the German ift Rosenheim institute.

A response to soundproofing standards

Soundproofing therefore plays an important role in room planning – an ever larger role. When people are always living, working, shopping and engaging in leisure activities in greater densities in urban environments, it's a challenge to create quiet spaces. For instance, the standard DIN 4109 for sound insulation applies to many tenders for building construction. Depending on the intended building use, it prescribes maximum noise levels.

Such standards make sense, however they do restrict planning. “Sliding doors previously had a reputation for providing only minimal soundproofing. This limited their use in situations when strict soundproofing standards were required”, explains Gordian Bayer,



“This solution makes it possible
to plan rooms with sliding doors,
even in noise-sensitive areas.”

Sebastian Zurkinden,
Product manager from Hawa Sliding Solutions

partner and managing director at erp Architekten in Baden, Switzerland. The HAWA Suono system opens new perspectives.

The Hawa Suono sliding door fitting marks a technical revolution. The wooden door leaf moves with elegance in three dimensions: It not only closes the lateral gaps tight, but also those at the top and bottom. The door slides in front of the door opening, sinks down onto the floor and rolls precisely up to the door frame. Once pushed closed, the door provides soundproofing up to 39 decibels. It has received the quality seal of the ift Rosenheim testing institute. As a welcome side effect of the noiseless sealing, the sliding doors also keep odors, dust, drafts and light out.

“Our company has been dealing with soundproofing since the 1970s”, explains Sebastian Zurkinden, Product Manager from Hawa Sliding Solutions: “All of that knowledge has gone into the HAWA Suono”. The multi-functional fitting system was launched on the market in 2017 and is distributed in various countries by select door specialists.

From surgeries to banks

The patented 3D sliding movement enables the soundproofing and disproves commonly held prejudices about sliding doors. The trend in room planning is toward a paradigm shift for doors, from pivoting to sliding motion. “Architects as well as joiners/cabinet makers have to experience the soundproofing first hand”, emphasizes Zurkinden. That can be done inside acoustic chambers set up by Hawa Sliding Solutions and sales partners at trade fairs. Zurkinden: “People often come over from adjacent booths so they can make phone calls inside the quiet acoustic chamber.” He sees many possible uses for HAWA Suono: Such as in offices, banks, surgeries and hospitals, aside from private households. Here discretion is key. You won't hear ever much of anything from HAWA Suono, but you'll see it more and more often.

Setting an accent in style

Who says that sliding door fittings should not be visible? More and more designers and interior architects are using the running track set as a design element. And the ECU Porta Black Edition, available immediately, serves precisely this trend.



Structure for the room:
the ECU Porta Black Edition
lends an individual accent.

“Form follows function” says a key principle of architecture. So the design of rooms should be derived from their function. Naturally this goes for sliding doors too. Functionally, they’re used to save space. But growing numbers of builders and interior designers are looking for sliding solutions for even large rooms. They prefer the clear line of a sliding door compared to a hinged door. This trend is made possible because systems like the EKU Porta support such versatile applications – and are suitable for wooden and glass doors. They’re now popular with hotels and restaurants; in living spaces and conference rooms.

Less installation work

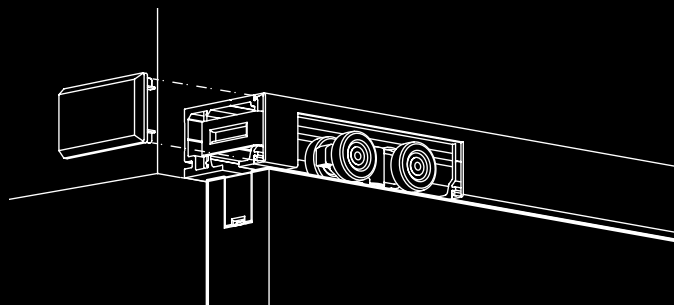
It’s not necessary to conceal the running track but rather, the cover can be used as a style element. Versions in timeless black are in especially high demand. Up ‘til now, however, they have required great effort from joiners/cabinet makers. Many attempted to “refine” the running tracks and aluminum panels. Now, however, this effort is no longer necessary: since the new EKU Porta Black Edition comes in a refined black version. Planners of rooms can use it to realize customer desires without additional effort. The fitting parts are available for wood and glass; and for doors from 60 to 100 kilos.

“The Industrial Style in black is popular for door and window frames.”

Anne-Laure Ferry Adam, interior architect

“Silver stainless steel was a popular choice for many years. For two years, the Industrial Style in black has been rising in popularity, which goes for door and window frames, shower dividers and metal fittings”, observes interior architect Anne-Laure Ferry Adam of Alfa Design: “On doors, the black metal lends a certain structure to the wall that’s appropriate in large spaces.” The sliding function remains important – but the form gains in importance.

For beautiful interiors



The EKU Porta family is a modular system for sliding doors of varying weight classes made of wood and glass. The solutions are characterized not only by their elegant design but also by their easy installation, flexible adjustment and straightforward maintenance. Once installed, the EKU Porta offers maximum convenience in daily use: its integrated soft closing system ensures effortless rolling in both directions.

The following fitting parts are available in the Black Edition: EKU Porta 60/100 HMD/HC (wood) and EKU Porta 100 GMD/GWF (glass).



Flexibility

There are hardly any limits when it comes to the combinations that can be realized with the EKU Porta modular system.



Comfort

The running gear with ball bearings and integrated soft and self closing mechanism ensure convenient everyday operation.



Productivity

Installation is as easy as adjustment is convenient. The doors hardly require any processing.



Aesthetics

The elegant profiles with versatile design options make any space into a designer’s dream.

Masters of wood

Hannes and Kurt Prader grew up around wood. Their master carpentry business in South Tyrol is where traditional craftsmanship meets the most modern technology. And because the family company makes no compromises on quality, it has relied on sliding solutions from Hawa Sliding Solutions right from the beginning.

Barbian, population 1710, 453 to 2,259 m ASL, is situated in the heart of Europe, says Hannes Prader while looking out his office window. The Trostburg mountain rises in front of the mountain face on the opposite side of the valley, where the A22 Brenner motorway leads through. Huge trucks travel between Modena in the south and the Brenner Pass to the north. At the same time, the Prader master carpentry shop is completely surrounded by its main resource: fragrant forests rise from the base of the valley to the tree line.

Order by mouse-click

While Kurt Prader (35) prefers the fieldwork of mounting and installation, Hannes Prader (41) is happiest working at the office. That's where all streams come together. The master carpenter likes his tidied up work table. "The table consists of oak wood with a linoleum covering over it," says Hannes Prader. His current projects are imposing: outfitting a complete apartment from kitchen to bathroom in Brixen, a hotel project in Wolkenstein-Gröden, a residential complex with seven residential units in Villanders. Working at his screen, Hannes Prader designs the

made-to-measure furniture and specialized doors. A 3D CAD program generates the blueprints. At the push of a button, he can forward all the data to the adjacent workshop – and place orders for sliding solutions from Hawa Sliding Solutions.

Industry 4.0 in Barbian

State-of-the-art machines stand ready at the master carpentry shop. The complement includes a 5-axis CNC lathe and fully automated panel saw. "Industry 4.0 in Barbian!" comments Prader proudly. Stalwart hand tools are always ready and at hand as well: variations of planes, milling machines, drills, ferrules and hammers. 14 master carpenters, journeymen and apprentices make everything imaginable to measure. This includes kitchens, sideboards, libraries, bar stools, bedrooms, beds and wall cladding made of wood. However naturally also front and interior doors, including soundproofed and fire protection doors in a wide range of individual versions. "We are members of the KOBRA regional consortium for fire protection doors, which makes us a sales partner of HAWA Suono," says Prader. Whether it's architectural hardware or furniture fittings: many designs also integrate folding, pivoting and stackable sliding solutions.





A strong partnership between brothers: Hannes Prader (left) prefers the office and production facility while Kurt Prader favours mounting and installation. Both like kitchens and work with the HAWA Concepta and HAWA Folding Concepta pivot and folding/ slide-in fittings (above).



A strong team: 14 master carpenters, journeymen and apprentices make every customer's wish a reality.

“We proceed like you would with Lego Technic: we stick exactly to the installation instructions.”



Growing up with the HAWA Junior

Hannes Prader has been familiar with HAWA Sliding Solutions right from the beginning. In fact, he grew up with HAWA Junior. At that time, this meant a traditional interior sliding door made of oak with a track on the wall. Today he recommends the HAWA Concepta and HAWA Folding Concepta pivot and folding/slide-in fittings systems for kitchens. And naturally, he's still recommending all versions of the HAWA Junior line as well. The systems are compatible with every idea. “There is little to nothing in the way of comparable solutions,” says Prader enthusiastically. When all the delivered individual parts fit together perfectly, the system's movement will function “forever”.

The best thing about his profession? “Making buildings into living spaces! When we go into a building under construction, we find concrete, bricks and utility lines. When we leave, you can cook, sleep and live inside,” says Prader. His master craftsman diploma dated October 12, 2011 hangs on the wall, next to a “Design and Carpentry Craftsmanship Award” from 2013. These are joined by artworks by his three children and below, a drawing on wood with the caption: “Prader special doors”.

Craftsmanship meets digitalization: Hannes Prader uses highly modern CAD systems to plan every piece of furniture precisely.

Quality enthusiasts: As a child,
Hannes Prader assisted his father, Konrad.
Now they've changed roles.



The father, Konrad, founded the company in 1973. His son Hannes later attended a technical school for carpentry. He then obtained his apprentice craftsman diploma and later, his master craftsman diploma. He began working at the company in 1990. “Back then we drew everything by hand and made 1:1 models in the workshop”, he remembers. Then in 2006, his brother Kurt joined too. The company's infrastructure was optimized with the addition of a 5-axis CNC machining center. Planning was transitioned to 3D CAD systems four years ago, which are connected to the machine park. To raise the profile for joiners/cabinet makers, Hannes Prader works on behalf of the South Tyrol Association of Master Craftspersons. He's convinced that “wood will remain the material of the future” and believes care should be taken to preserve this renewable resource. He's pleased that more and more of his contemporaries are coming to share his view. In any event, demand for wood products is only growing.

Kitchen enthusiast

For Hannes Prader, the most interesting furniture is found in the kitchen. Life's workshop, as it were. Power, water, fire, cabinets,

storage, sliding solutions: everything here has to function. When a kitchen hasn't been planned properly, one feels uncomfortable using it. Not all kitchens can or have to be realized in such grand style as the prototypes at Eurocucina, one of the world's leading trade fairs for kitchens held in Milan, Italy. The ultimate furniture islands and walls that unfold like magic within kitchen workshops are just as stunning and effective at a smaller scale.

A preference for walnut

Although his kitchen tends to be small, compact and traditional, he does have a pantry, says Hannes Prader. From all available options, he chose wood coated in dark red paint for the lower cabinets and visible walnut for the upper cabinets. Although he lives, works, hikes and mountain bikes among Swiss pine, he prefers the aesthetics of walnut. The grain makes the fine wood come to life. Currently oak is also in high demand. The structure, color and durability of this trendy wood make it a favourite. When furniture should be unpretentious, modern and yet have a pleasant odor, there's the perfect Swiss pine compromise: outside coated, inside left natural. This means you enter a fragrant inner world whenever you open it up.

3 tips from the Master Carpenter

“The better the preparations for mounting a sliding solution from Hawa Sliding Solutions, the smoother the mounting goes”, says Hannes Prader.

1. Planning

Take extra care to verify all dimensions during the planning stage. If questions arise, contact a specialist at Hawa Sliding Solutions – someone is usually standing by to help you immediately.

2. Care

Take special care when opening the delivered package and components.

3. Information

Even if the operating instructions are extremely long due to all the languages: follow each mounting step exactly. In Lego Technic too, you simply cannot leave anything out.



EKU Banio

Open is “in”

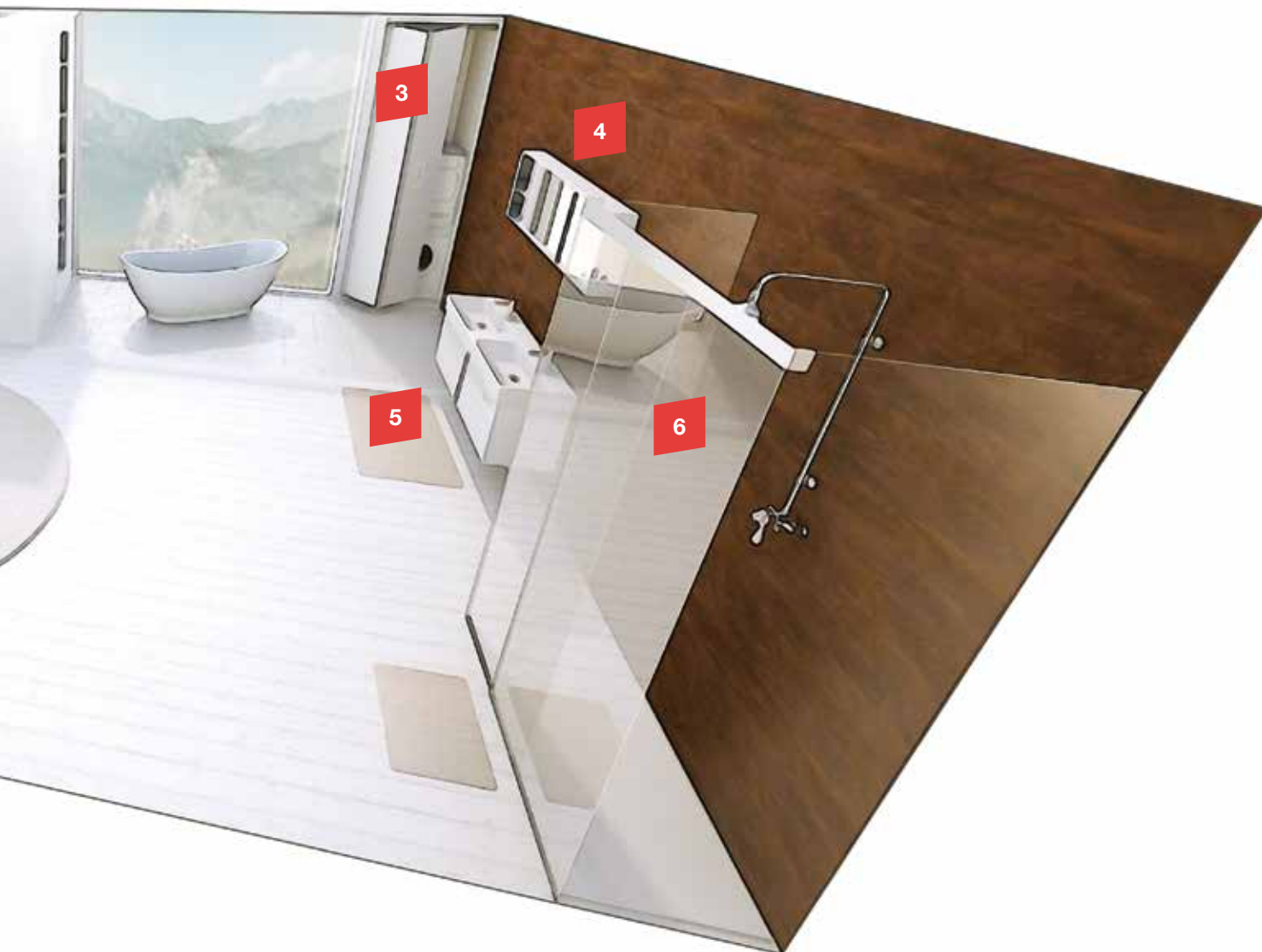
Bed and bath: Wellness and relaxation are coming closer. This brings wellness into the room and for joiners/cabinet makers, offers the opportunity to give sliding solutions a footing in the bathroom.

It's been almost 150 years since prestigious citizens in cities first became able to connect their commodes to running water. This sparked a revolution in hygiene that radically changed our everyday lives. And ever since, body and bath culture have continued to grow in importance. One trend is clearly apparent: the once utilitarian room with only an austere shower is now transforming into a wellness zone within the living space.

However, the compact floor plans of modern bathrooms have not kept pace with this development. In many locales, a battle has to be waged for each additional square meter. Anyone who wishes to win this battle stands well equipped with sliding doors in buildings and on furniture.

From mere shower to wellness oasis

When it comes to elevating the bathroom, however, plumbing and bathroom specialists quickly reach their limits. On the other hand, joiners can expand their area of activity and provide additional assistance. For example, by suggesting innovative solutions for furniture and interior spaces featuring sliding door fittings. Even within the shower enclosure itself, they can add value, such as installing a transparent glass shower with the EKU Banio sliding solution. The running tracks can be cut to measure on-site with millimeter precision, which enables countless design options and makes the shower into a wellness oasis. Glass processing is not necessary. The relaxation begins with mounting.



1. Walk on in!

With the HAWA Junior 80 B Pocket, which includes the assembly set, the door can be conveniently concealed in the wall pocket.

2. Transforming wall shelf

What is visible, and when? This can be easily managed. The EKU Porta 100 HM makes a flexible shelf a reality.

3. Cleanly concealed

The pivot folding door with the HAWA Folding Concepta 25 rapidly conceals the washing machine.

4. Mirror, mirror ...

Any mirrored cabinet can be quickly optimized with the straightforward clip-on mechanism of a delicate EKU Clipo 16 GK (IS).

5. Convenient dresser

The EKU Frontino 20 H FS is a classic among individual sliding dressers – and requires only 15 minutes for mounting.

6. All clear?

All-glass shower enclosures extend the space. The EKU Banio 40 GF makes customized solutions a reality.

Hawa Junior

Magic out of your (wall) pocket

The HAWA Junior 80 B Pocket sliding door system works wonders – even economic ones. For instance, it marks the beginning of STOKK GmbH's history as a company.



Sliding door enthusiast

Roman Koch is CEO of STOKK GmbH, a company that specializes in innovative sliding door systems. He most favours solutions that rely on wall pockets.

Spring 2019 Following investment of 30 million euros, the five-star Quellenhof Luxury Resort Lazise on Lake Garda began operations. Doors with the HAWA Junior and HAWA Purofino sliding door fittings bring convenience to the rooms. To accomplish this, a recently founded company participated: STOKK GmbH based in Goldrain, Italy. Five partners founded it in October 2018. CEO Roman Koch in his own words.

Mr. Koch, what inspired you to establish a door systems company?

We were trying to find a wall insert pocket for a full glass door. However we were not able to realize our plans with the standard products available on the market. We had to redesign the entire element from the ground up in order to mount all connecting parts precisely. The biggest challenge was the ceiling-mounted track system. Here, we had to ensure that the running track could be removed at any time. That's how we noticed the HAWA Junior Pocket system. It has all the characteristics we need. At that moment, our company was born.

What are the advantages of wall pockets?

The biggest advantage that wall pockets have over front-running sliding doors is that one has full use of the entire wall on both sides. This gives you extra room. When the door is open, the door leaf disappears in the insert pocket. This promotes openness in living spaces. Although this requires that the installed element have similar qualities as the rest of the wall. For example, this means that the power connections and water lines also



1

Easy installation

The retainer profile of the HAWA Junior 40/80/120 comes pre-mounted.

The running track can be used with the door leaf using rattle-proof bayonet locks.



2

More options in the set

With the assembly set, even doors made of wood and glass up to 120 kilos are child's play.

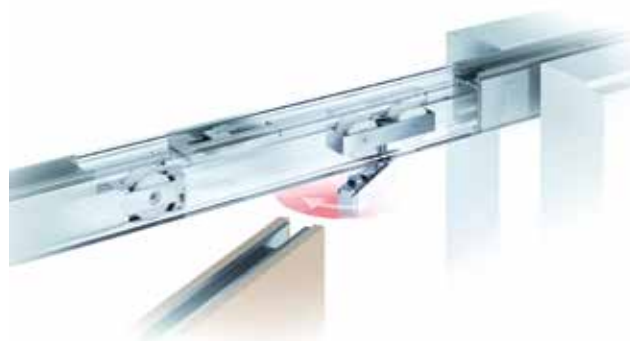
run in the wall pocket and any type of plaster can be used as cladding. As such, it must be possible to arrange a table or a wardrobe against a wall pocket. With regard to the door size, there can be no restrictions for us and our customers.

Are sliding doors with wall pockets trendy right now?

Of course. Sliding doors are seeing a dramatic rise in popularity, primarily in the hotel industry and industrial buildings. According to estimates, sliding doors make up just 4 to 6 percent of all interior doors. We expect this share to see massive growth in the coming years. Sliding doors with wall pockets make it possible to make use of the full floor plan, especially in compact spaces. This can help to meet legal requirements for barrier-free access.

What sliding doors do you use for your individual wall pocket solutions?

We usually use the HAWA Junior 80 B Pocket since it is sufficient for wooden doors up to 80 kilos. To date, our largest wooden door leaf had clearance of 185 centimeters and a height of 250 centimeters. The wall element was 390 centimeters in width. There we used the HAWA Junior 120. We were impressed by the installation and running performance offered by the sliding solutions from Hawa Sliding Solutions. The roller does not get soiled, making the fittings very easy to maintain. We always insist on the highest quality. That's why we exclusively work with systems from Hawa Sliding Solutions. The company has perfected the heart and soul of any sliding door – the retainer profile and running track.



3

Easy maintenance

The running track can also be removed any time after installation. All components remain accessible and expandable.

Digitalization visionary

Rahaf Harfoush (35) directs the Red Thread Institute of Digital Culture and investigates how digitalization turns our life on its head. She previously worked on Barack Obama's digital election campaign and is a New York Times bestselling author. Originally from Syria, Rahaf Harfoush grew up in Canada and currently lives in Paris.



Back and forth with Rahaf Harfoush

Ms. Harfoush, what things are you tempted to let slide until tomorrow?

Housework! If it means I can get to the gym and spend some time with my husband and my dog, I'm very happy to leave a few plates in the dishwasher.

Where would you most like a sliding door?

I'd quite like a sliding door that connects me with nature, so I could live indoors as well as outdoors. I like to play with boundaries. I love flexibility!

So would you say you're quite a flexible person?

Yes and no. Normally I think through each situation carefully, as well as listening to my gut feeling. Human complexity is something we should come to grips with!

What appointments do you never let slide?

Taking my dog for a walk. I've found these regular breaks to be a good way to deal with stress and stay creative.

What's a typical situation you're always letting slide?

Everything that goes with being an adult. Things like paying taxes and official paperwork. At the moment I'm trying to get my driver's license in France, which I've been putting off for a long time.

What comes to mind when you hear "sliding door"?

One of my favourite movies is "Sliding Doors", which shows a woman living in two different realities. For me, sliding doors are beautiful metaphors. When I have to make important decisions that will send my life in a new direction, I think of a sliding door.



SLIDE #2 March 2020 **Publisher/Copyright** Hawa Sliding Solutions AG, Sliding solutions, CH-8932 Mettmenstetten, info@hawa.com, Technical changes reserved **Responsible for project** Rolf Arnold **Concept/Editorial/Design** Basel West Unternehmenskommunikation AG, CH-4053 Basel; Project management: Thomas Aerni; Editorial: Edith Arnold, Timea Hunkeler, Stephan Lehmann-Maldonado, Anita Merkt, Reto Westermann; Layout: Michael Aerni; Lithography: Cora Beck **Printing** werk zwei Print + Medien Konstanz GmbH **Languages/Copies** German 9000, English 9000, French 4000 **Picture credits** Page 1: ISA, Sam Oberter; page 2: René Lamb; pages 4, 13: Bruce Damonte; page 5, 18: Sophie Stieger; page 6: Pierluigi Palazzi / Shutterstock.com; page 8: Christian Kober 1 / Alamy Stock Foto, Marc Eggimann; page 9: IGN.Design.AG; page 10: Gianluca Fiore; page 11: Alessandro Magalini, Johannes Killinger; page 12: Anne Hamersky; page 13: Tim D. Coy; page 14: Studio Periphery; page 15: City Pop AG, Rainer Borcherdig; page 17: ETH Zürich; pages 24–25: Michael Ryan Chan; pages 26–27, 46–47: Filip Wolfensberger; pages 28–29: Courtesy of Edgewood Tahoe; page 30: Saadiyat Rotana Resort & Villas; page 31: Sebastian Hopp; page 32: Accor Gruppe; pages 33–36: Axel Linge; pages 33, 43–45, 48–49: Arnold Ritter; page 43: Wolfgang Gafriller; page 51: Gregory Gilbert-Lodge **Art. No.** 789.0123.001

Protection of trademarks/copyright HAWA is a trademark registered in the name of Hawa Sliding Solutions AG. The names Junior, Concepta, Clipo and Frontino are product family names either registered in the name of Hawa Sliding Solutions AG, or to which Hawa Sliding Solutions AG claims exclusive rights of use in connection with its products and services. The contents of this publication, including all photographs and graphics are protected by copyright, and may not be copied, modified or otherwise used without the explicit consent of Hawa Sliding Solutions AG.

EKU Combino

New sliding comfort in 16 designs

Smooth,
silent run-
ning up to
80 kg

Cabinets with wooden doors can be realized in 16 different designs with the completely redesigned **EKU Combino** sliding door fitting. Without cabinet processing, with tool-less door installation as well as easy, continuous adjustments on the finished furniture item. And with a lot of operating convenience: thanks to guides with zero clearance, outstanding running systems and soft closing technology completely integrated in the system. For additional information visit www.ekucombino.com

Hawa Sliding Solutions AG, Switzerland, www.hawa.com