

Automated fitting with SMI interface for wooden or metal shutters up to 140 kg (309 lbs.), with screwed on running track. Ceiling or architrave mounting.

Product highlights



Comfort

Automated system with building control interface
Optimized individual use of daylight



Security

Extremely robust sliding shutter that has been tested for 100,000 cycles
High resistance to wind and corrosion

Technical specifications



Max. 140 kg (309 lbs)



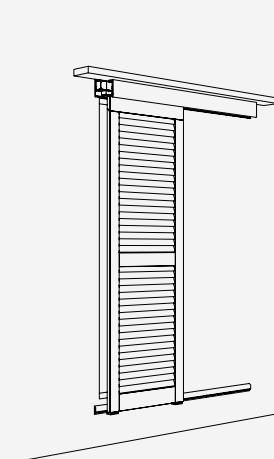
Max. 3200 mm (10' 5 31/32")



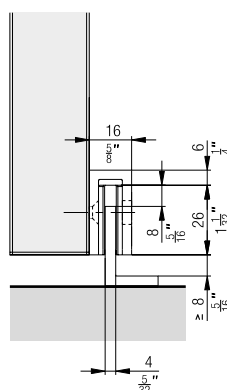
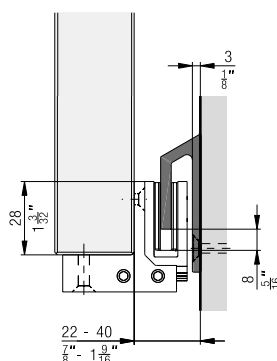
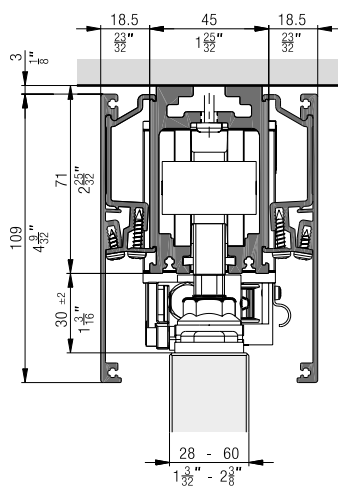
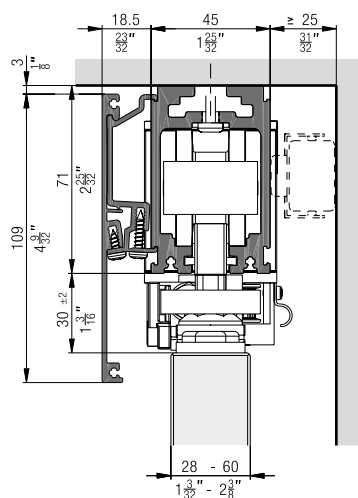
750–3750 mm (2' 5 17/32" to 12' 3 5/8")
(Max. shutter area 6.24 m² (67 ft²))



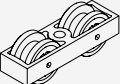
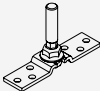
28–60 mm (1 3/32" to 2 3/8")



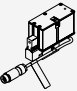
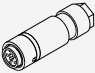
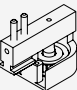
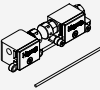
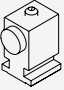
Installation examples




Set for 1 sliding shutter up to 140 kg (309 lbs.)

		No.
Hawa Frontslide 140 Matic, for 1 sliding shutter		25144
		No.
		25144
Set consisting of:		
	Two-wheeled running gear, M12, plastic wheels	2 24554
	Top fixing plate, stainless steel, with hanger bolt M12	2 24567

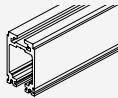
Set Motronic 140 SMI

		No.
Hawa Motronic 140 SMI for Hawa Frontslide 140 Matic, incl. control unit, toothed belt lock and pulley wheel		30522
		No.
		30522
Set consisting of:		
	Hawa Motronic 140 SMI with integrated control and connecting cable with a premounted Wieland plug	1 30318
	Wieland connector for Hawa Motronic 60/100/140 SMI	1 30277
	Pulley wheel for automatic mechanism	1 24792
	Toothed belt lock	1 19654
	End stop, aluminum	2 24786


Toothed belt
Toothed belt length calculation: 2 x system width

		No.
	Toothed belt, 2.7 m (8'10 5/16"), fibre glass reinforced, black	20208
	Toothed belt, 5 m (16' 4 27/32"), fibre glass reinforced, black	19667
	Toothed belt, 8 m (26' 2 31/32"), fibre glass reinforced, black	19682
	Toothed belt, 10 m (32' 9 11/16"), fibre glass reinforced, black	19668
	Toothed belt, 15 m (49' 2 9/16"), fibre glass reinforced, black	20370
	Toothed belt, 50 m (164' 1/2"), fibre glass reinforced, black	19669

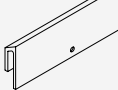
Running tracks

		mm (inch)	No.
	Running track, aluminum, anodized, pre-drilled	3500 (11' 5 25/32")	24841
		6000 (19' 8 7/32")	24799
		cut to size	24800


Connecting pins for running tracks

		No.
	Connecting bolts, 6-piece set	17221


Guide tracks

		mm (inch)	No.
	Guide track, aluminum, anodized, pre-drilled	6000 (19' 8 7/32")	24460
		cut to size	24462

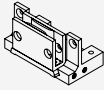
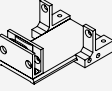
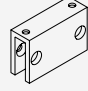
Panels

		mm (inch)	No.
	Cover panel, aluminum, anodized	3500 (11' 5 25/32")	24845
		6000 (19' 8 7/32")	24808
		cut to size	24809
	Cover panel, aluminum	6000 (19' 8 7/32")	24810
		cut to size	24811

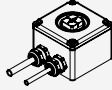

Panel attachment components

		No.
	Parts for fitting running track cover, at least every 500 mm (1' 7 11/16''), 5-piece set	24767

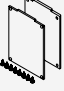
Guides

		No.
	Floor guide unit, short, for guide track	24543
	Floor guide unit, long, for guide track	24544
	Guide slider, for screw fixing	24542

Start-up box

		No.
	Commissioning box	23789
	SMI adapter for commissioning box	30363

Accessories

		No.
	Front cover plates, aluminum, anodized, for ceiling fitting, 1 pair	24817
	Front cover plates, aluminum, for ceiling fitting, 1 pair	24819


Technical data Hawa Motronic 140 SMI

Drive with integrated controller, with SMI 3.0 BF interface, CE tested

Feed:	100 – 240 VAC, 50/60 Hz, 30 W
Max. preliminary fusing:	16 A
Overvoltage category:	II
Degree of protection:	I
Temperature range:	-20° C to +60° C
Contamination level:	1
IP protection level:	IP 54
Max. speed:	50 mm/s
Max. drive power:	100 N (with internal overload protection)
Switch elements:	Customer-provided
Mains isolation device:	Customer-provided

Type plate


Hawa Motronic 140



I- →

Artikel-Nr. 30318
 Kontakt www.hawa.com
 Charge 20ZZ/YYYYYY
 Key-ID 0016XXXXXX, Bj: 20ZZ
 Antriebskraft max. 100 N, IP54
 100-240 VAC, 50/60 Hz, 30 W
 Geschwindigkeit max. 5 cm/s
 Betriebstemp. -20 °C bis +60 °C

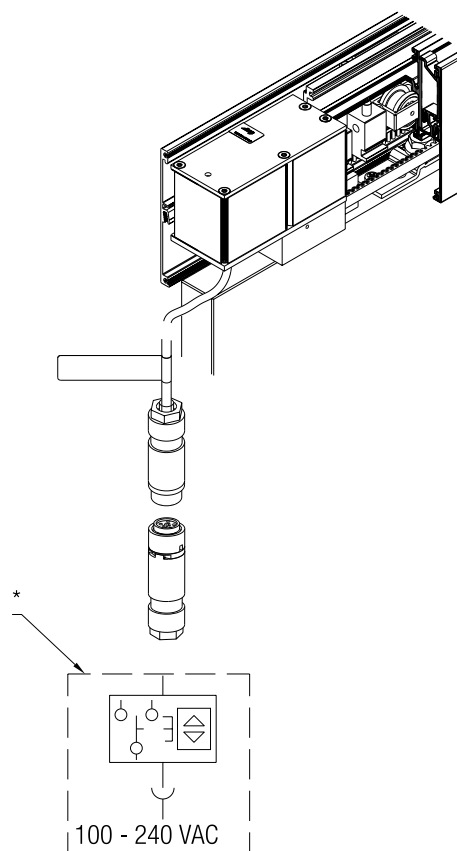
Hawa



I+ →

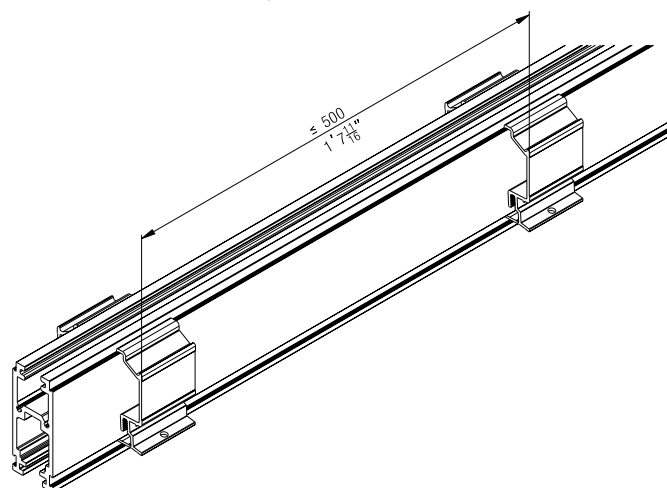
Actuation and operation of the system

The system can be operated with normal commercial sun blind switches.

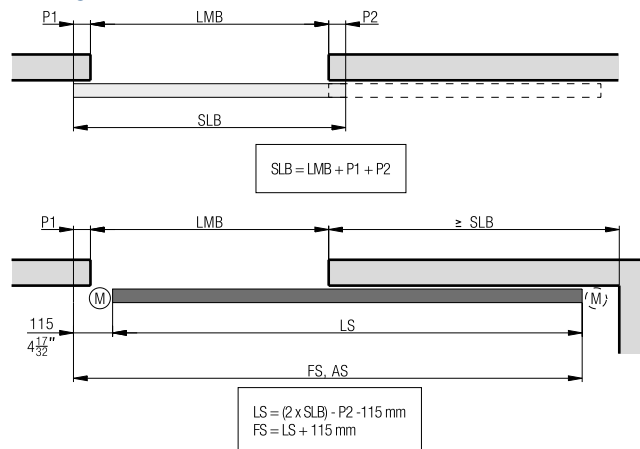


* to be provided by customer

Panel attachment component installation

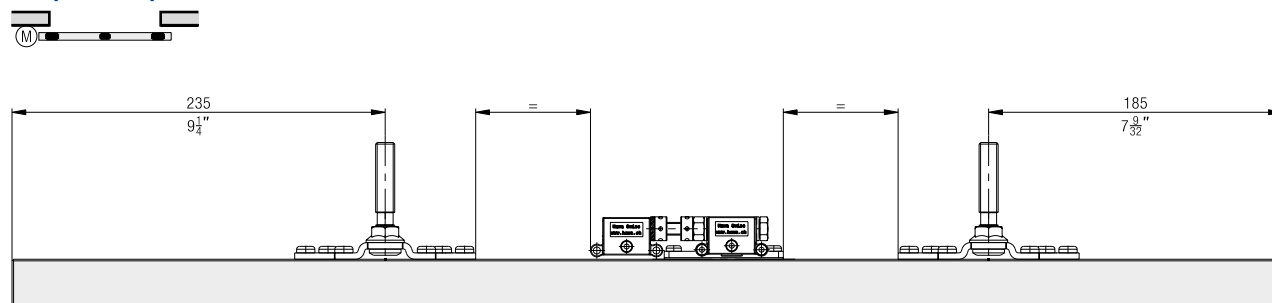


Sliding shutter width calculation

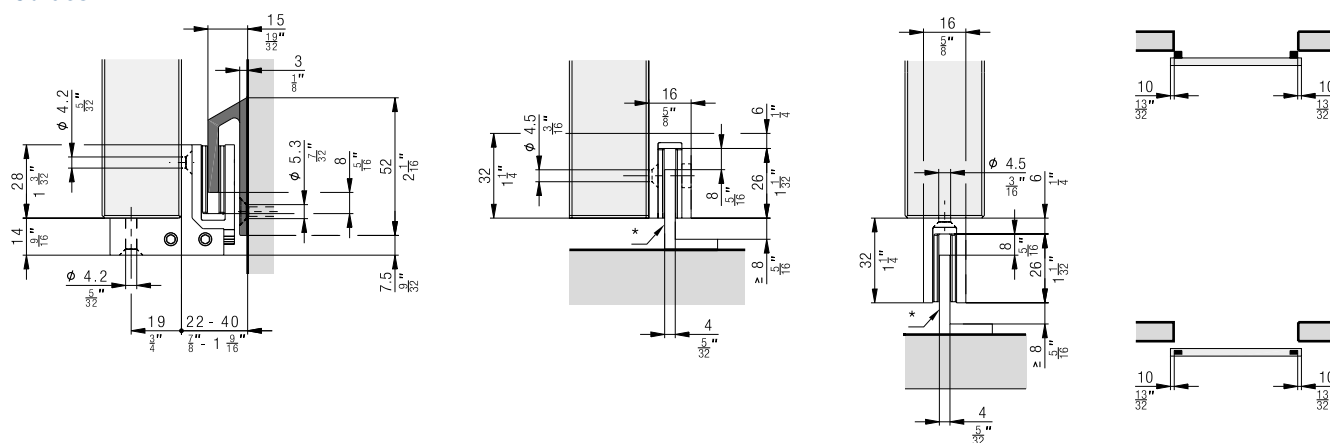


AB = System width
LMB = Inside clearance
SLB = Sliding shutter width
P = Sliding shutter overlap
LS = Running track
FS = Guide track
M = Minimum space for drive unit

Suspension points



Guides



* to be provided by customer

Planning/execution

- Corrosion resistance class 4 in accordance with EN 1670 (very good resistance)
- Wind resistance class overview from page 198

Further information about the product can be found on www.hawa.com.