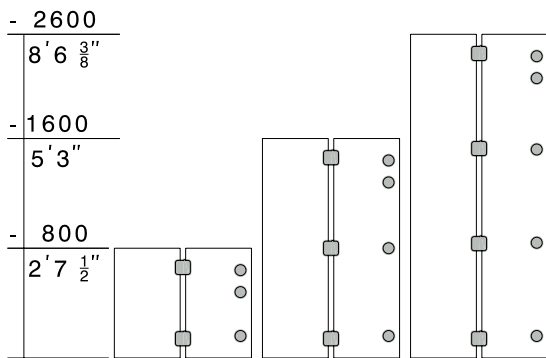
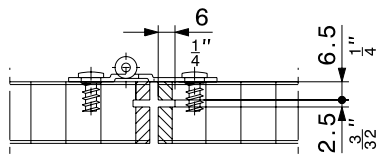


Arrangement and number of hinges

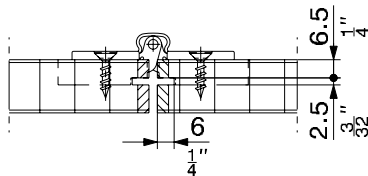


On the outer side commercially available concealed spring-loaded hinges for inset doors, $\geq 110^\circ$, may be used

Grooves for vertical sealing profile



Hinged to side version



Not hinged to side version

Accessories

		code
	Folding panel connecting elements for two pairs of folding sliding doors (2-piece set)	14933
	Panel surface equalizer, plastic black (2-piece set)	14906
	Furniture bar bolt lock, 27/110/8 mm ($1\frac{1}{16}''/4\frac{21}{32}''/5/16''$), nickel finish, with 1 EURO key, 2 half-round rods, 1500 mm ($4'11\frac{1}{16}''$) strike plates (simultaneous locking)	left 20875
		right 20876
	Furniture bar bolt lock, 27/110/8 mm ($1\frac{1}{16}''/4\frac{21}{32}''/5/16''$), nickel finish, with Kaba-8-cylinder (length 25 mm [$0.984''$]) 1 press-fit sleeve, 2 keys, 2 half-round rods, 1500 mm ($4'11\frac{1}{16}''$), rod guides and strike plates (separate locking)	left 20873
		right 20874
	Concealed hinge, dull nickel finish, 110° (inset panels)	14528
	Concealed hinge, dull nickel finish, 120° (overlying panels)	15059
	Mortising template for cup recesses	14761

Order specifications

- Number and type of sets
- Number and type of profile sets
- Number of rollers and type of vertical seal profiles
- Number and type of accessories
- Whether with or without mortising template

Planning/installation

Please use the corresponding installation instructions: 15042 for folding panel pairs that are to be freely moved to and fro 14826 for folding panel pairs that are to be attached to the side. Each set of tracks contains installation instructions. (→ www.hawa.ch → Hawa Productfinder)