

Greatest possible transparency.

Hardware system for all-glass sliding doors with concealed suspension, weighing up to 80 kg (176 lbs.).

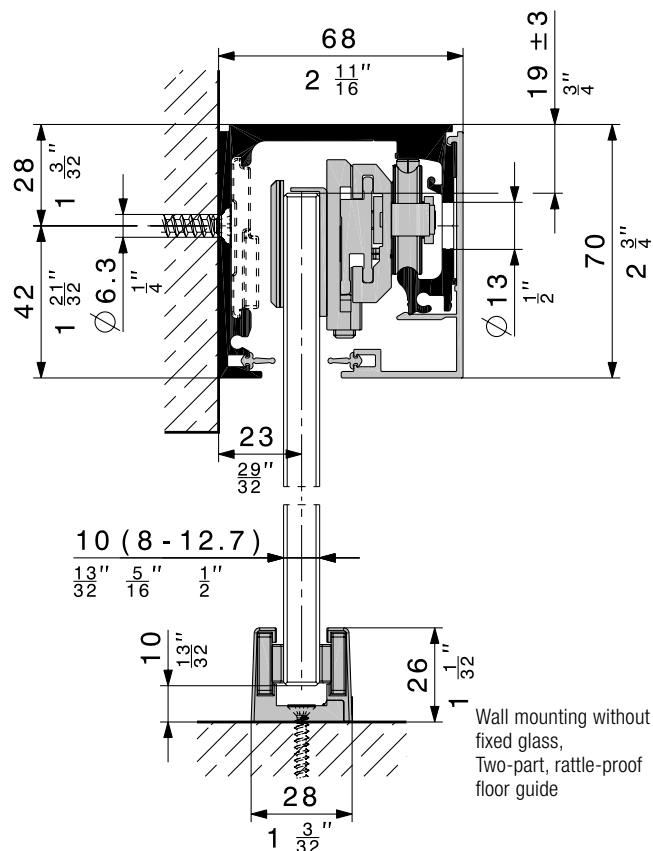
Description

Hawa Purolino Plus 80: the sophisticated hardware system for all-glass sliding doors with concealed suspension for mounting to the wall or ceiling or integrating in the ceiling offers not only outstanding sliding convenience but also exemplary ease of installation. There are many reasons that make sliding solutions based on the Hawa Purolino Plus 80 a pure pleasure. The high-quality ball-bearing technology incorporated in each trolley, for instance, allows you to move doors weighing up to 80 kg quietly and effortlessly on anodized running tracks. During installation, you will benefit from advantages such as the two-part, point-fixing and rattle-proof floor-mounted guide, the simple clip-on cover and screen profiles and the suspension wedges. The word «PLUS» stands for the optionally available soft closing mechanism SoftMove 80 for the Hawa Purolino Plus 80, as well as for the fixed glass profile that guarantees a convenient option for room partitioning solutions when bolted to the running track. There are also optional additional profiles for vertical wall connections and for locking the installation with the Hawa Toplock for all-glass sliding doors.

Applications

Ideal for situations incorporating glass as room partitioning and design elements, for instance in hotels, restaurants, retirement residences, conference rooms, administration buildings and private residences.

Example of application: wall mounting



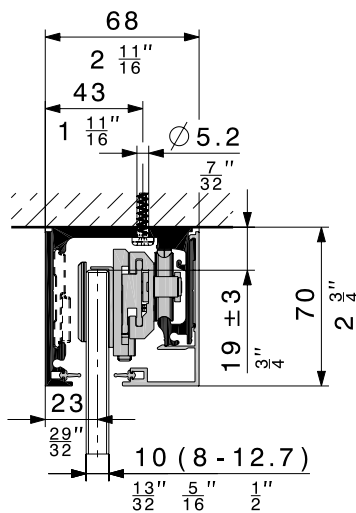
Features of the Hawa Purolino Plus 80

- Maximum door weight 80 kg (176 lbs.)
- Minimum door width without soft closing mechanism SoftMove 80: 600 mm (1'11⁵/₈") with SoftMove 80, two-sided damping: 850 mm (2'9¹⁵/₃₂")
- Trolleys with high-quality ball bearing technology
- Glass suspension technology completely integrated in the running track
- Fast installation and height adjustment thanks to suspension wedges
- Glass doors with a interlocking connection to the hardware
- Surfaces of running tracks, fixed glass profiles and cover profiles available in plain anodized or stainless-steel effect
- Removable cover and screen profiles
- Fixed glass profile attachable to the running track
- High-quality metal cover caps for the face side of running tracks without fixed glass elements
- Combinable with a vertical wall profile and a Hawa Toplock
- Glass thickness sliding door:
ESG (fully tempered monolithic glass): 8/10/12/12,7 mm (⁵/₁₆" / ¹³/₃₂" / ¹⁵/₃₂" / ¹/₂")
VSG (fully tempered laminated glass): 8–12,7 mm (⁵/₁₆" – ¹/₂")
- Glass thickness fixed glass:
ESG (fully tempered monolithic glass) and VSG (fully tempered laminated glass) 8–12 mm (⁵/₁₆" – ¹⁵/₃₂") [with silicon up to 13 mm (¹⁷/₃₂")]

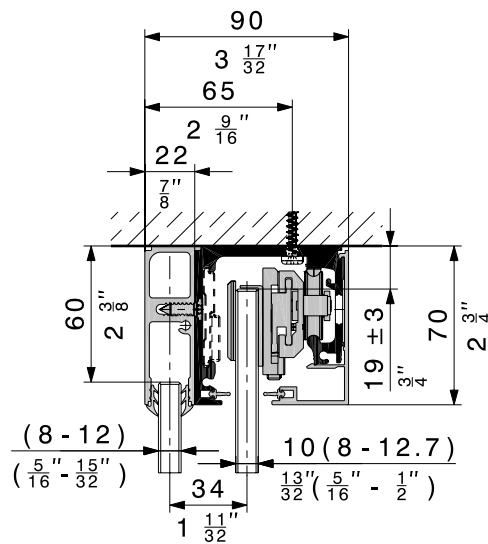
Further application examples

The Hawa Purolino Plus 80 is ideal for mounting to the wall and ceiling and also for recessed ceiling applications. The two ceiling-mounting variants can be designed with or without fixed glass elements. The relevant components such as trolley, track stop and SoftMove 80 can be fitted and removed from underneath on every design option.

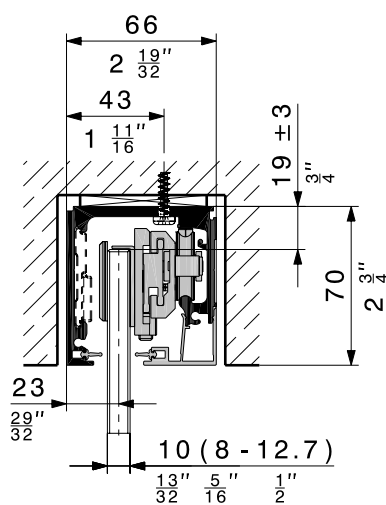
Hawa Purolino Plus 80 makes an aesthetically appealing impression all round thanks to the cover and screen profiles that simply clip on when installation is complete.



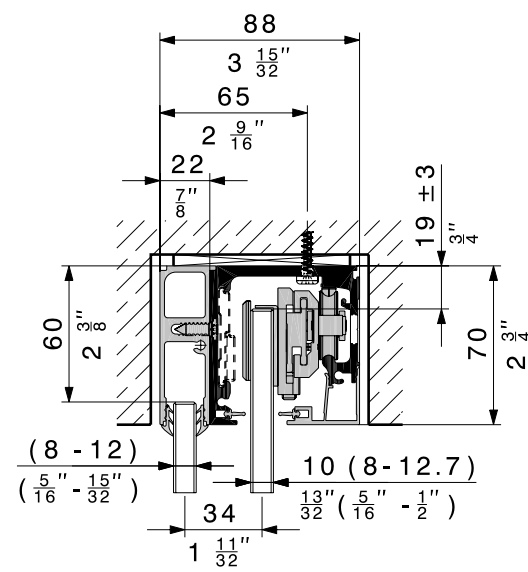
Ceiling mounting
without fixed glass



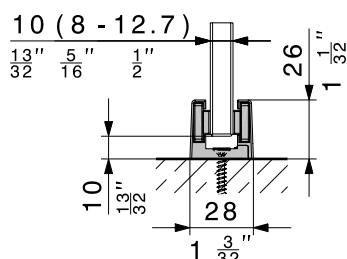
Ceiling mounting with
profile for fixed glass



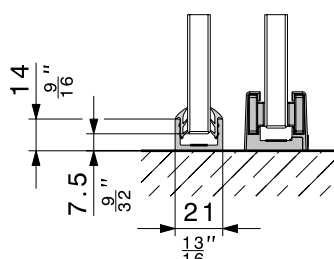
Integrated ceiling mounting
without fixed glass



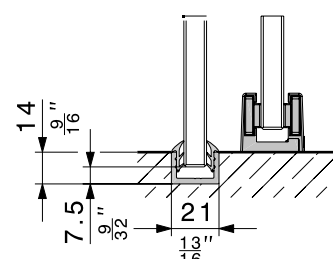
Integrated ceiling mounting
with profile for fixed glass



Two-part, rattle-proof
floor guide



Surface mounted bottom/wall
profile to fixed glass,
two-part,
rattle-proof floor guide

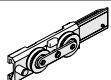
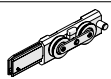
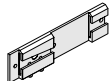
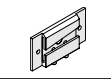
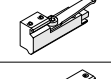
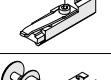
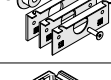

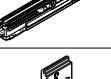
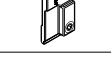
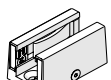


Recess mounted bottom/wall
profile to fixed glass,
two-part,
rattle-proof floor guide


Hawa Purolino Plus 80, set without running tracks

	code
Hawa Purolino Plus 80, set for 1 panel, fully tempered monolithic glass, anodised, no soft closing mechanism	25549
Hawa Purolino Plus 80, set for 1 panel with 1 soft closing mechanism	25550
Hawa Purolino Plus 80, set for 1 panel, fully tempered monolithic glass, stainless steel effect, no soft closing mechanism	25551
Hawa Purolino Plus 80, set for 1 panel, fully tempered monolithic glass, stainless steel effect, soft closing mechanism	25552

Set comprising

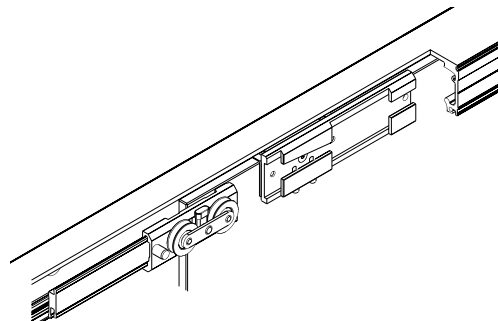
			25549	25550	25551	25552	code
	Two-wheeled trolley left, with plastic-tyred ball bearing wheels		1	1	1	1	23941
	Two-wheeled trolley right, with plastic-tyred ball bearing wheels		1	1	1	1	23942
	Suspension wedges for glass mountig, left		1	1	1	1	23939
	Suspension wedges for glass mountig, right		1	1	1	1	23940
	Track stop, adjustable retaining force, left		1	1	1	1	23874
	Track stop, adjustable retaining force, right		1	1	1	1	23875
	Glass fixing parts for fully tempered monolithic glass, thickness 8, 10, 12 (12,7) mm		1	1	1	1	25553
	Glass connector, complete		–	1	–	1	23747
	Soft closing mechanism SoftMove 80 for Hawa Purolino Plus 80, two-sided damping		–	1	–	1	23880
	Trigger cams, complete, left or right mountable		–	2	–	2	24161
	Rattle-proof floor guide 2-part, incl. self-adhesive sliders for satinised glass, glass thickness 8–13 mm ($\frac{5}{16}$ – $\frac{17}{32}$)	matt chromium finish	1	1	–	–	21029
		stainless-steel effect	–	–	1	1	20858

Glass fixing parts

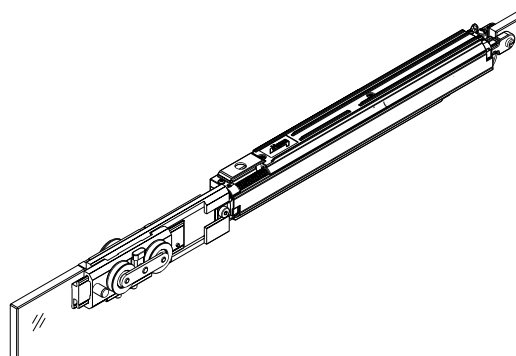
	mm	code
	2 x 4	25554
	2 x 5	25555
	2 x 6	25556

Suspension wedges for glass sliding doors

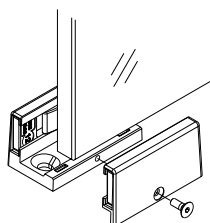
The suspension wedges set new standards with regard to ease and speed when installing and adjusting the height of glass sliding doors. Firstly, because the wedges simply slide into the trolleys; secondly, because the soft closing mechanism SoftMove 80 for the Hawa Purolino Plus 80 attaches to the left-hand suspension wedge with no need for additional components.


Soft closing mechanism SoftMove 80 for Hawa Purolino Plus 80

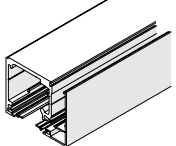
The soft closing mechanism SoftMove 80 gently decelerates and closes sliding doors equipped with Hawa Purolino Plus 80. Integrated completely in the running track, the soft closing mechanism SoftMove 80 gently decelerates the sliding doors and pulls them into the end position.


Bottom door stop

The sliding doors have a two-part, rattle-proof floor guide.

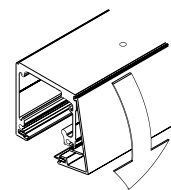
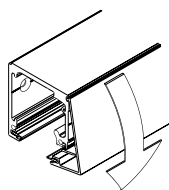


Running track set, wall mounting without fixed glass

Caution: - Hole positions vary - Minor differences in colour are possible			mm inch	code
	Running track set for wall mounting, predrilled, incl. angled cover profile, alu, screen profile, rubber black	plain anodized	2500 (8'2 $\frac{1}{16}$ ")	24151
		stainless-steel effect, brushed	2500 (8'2 $\frac{1}{16}$ ")	24152

Wall or ceiling mounting without fixed glass

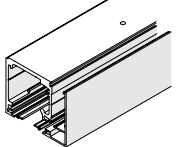
The running track is pre-drilled for wall or ceiling mounting; the angled cover profile is clipped on after installation.



Wall mounting:
Running track without fixed glass, dressing with angled cover profile

Ceiling mounting:
Running track without fixed glass, dressing with angled cover profile

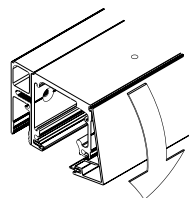
Running track set, ceiling mounting without fixed glass

Caution: - Hole positions vary - Minor differences in colour are possible			mm inch	code
	Running track set for ceiling mounting without fixed glass, predrilled, incl. angled cover profile, alu, screen profile, rubber black	plain anodized	2500 (8'2 $\frac{1}{16}$ ")	24153
		stainless-steel effect, brushed	2500 (8'2 $\frac{1}{16}$ ")	24154

Ceiling mounting with fixed glass

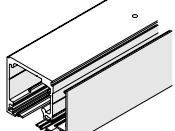
The running track in the running track set for ceiling mounting has drill holes on two sides. Those on the top are for mounting to the ceiling and those on the side are for attaching the fixed glass profile (to be ordered separately).

The angled cover profile is clipped to the running track and fixed glass profile once they are attached to the ceiling.

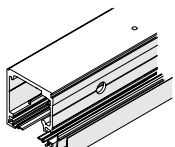


Ceiling mounting:
Running track with fixed glass and dressing with angled cover profile

Running track set, ceiling mounting (with fixed glass)

Caution: - Hole positions vary - Minor differences in colour are possible			mm inch	code
	Running track set, predrilled for ceiling mounting and fixed glass profile, incl. angled cover profile, alu, screen profile, rubber black	plain anodized	2500 (8'2 $\frac{1}{16}$ ")	24157
		stainless- steel effect, brushed	2500 (8'2 $\frac{1}{16}$ ")	24158
Profile for fixed glass to order separately				

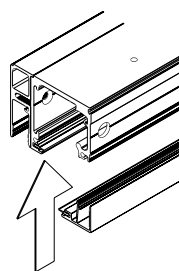
Running track set, integrated ceiling mounting (with/without fixed glass)

Caution: - Hole positions vary - Minor differences in colour are possible			mm inch	code
	Running track set, predrilled for integrated ceiling mounting and fixed glass profile, incl. lower cover profile, alu, screen profile, rubber black	plain anodized	2500 (8' 2 ¹ / ₁₆ ")	24155
		stainless- steel effect, brushed	2500 (8' 2 ¹ / ₁₆ ")	24156
Profile for fixed glass to order separately				

Integrated ceiling mounting with/without fixed glass

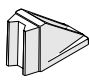
This running track set (running track drilled on two sides) is used for recessed ceiling installations with and without fixed glass elements. The profile for fixed glass elements (to be ordered separately) is attached to the running track with special countersunk screws.

The clip-on cover profile is attached to the running track (with or without a fixed glass profile) from below after it is fitted in the ceiling.



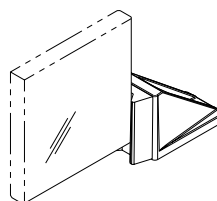
Integrated ceiling mounting:
Running track with fixed glass and dressing with lower cover profile

Bottom door stop

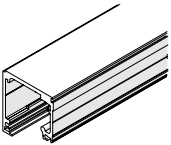
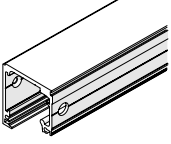
Caution: Minor differences in colour are possible			code
	Bottom door stop with centering assembly	dull chromium finish	20773
		stainless steel effect	21473

Bottom door stop

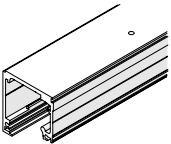
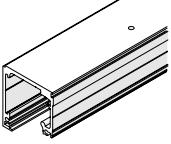
The bottom door stop and track stop simultaneously bring the sliding doors to a halt, quietly and with no strain on the hardware.



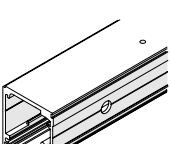
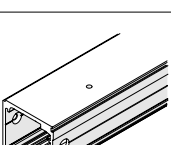
Running track, wall mounting without fixed glass

Caution: - Hole positions vary - Minor differences in colour are possible			mm/inch	code
	Running track with cutout, predrilled for wall mounting, alu	plain anodized	2500 (8'2 ⁷ / ₁₆ ")	23841
		stainless-steel effect, brushed	2500 (8'2 ⁷ / ₁₆ ")	23842
	Running track, predrilled for wall mounting, alu	plain anodized	6000 (19'8 ⁷ / ₃₂ ")	23833
			cut to size	23834
		stainless-steel effect, brushed	6000 (19'8 ⁷ / ₃₂ ")	23835
			cut to size	23836

Running track, ceiling mounting without fixed glass

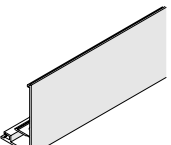
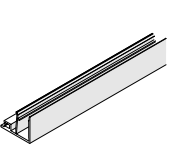

Caution: - Hole positions vary - Minor differences in colour are possible			mm/inch	code
	Running track with cutout, predrilled for ceiling mounting, alu	plain anodized	2500 (8'2 ⁷ / ₁₆ ")	23843
		stainless-steel effect, brushed	2500 (8'2 ⁷ / ₁₆ ")	23844
	Running track, predrilled for ceiling mounting, alu	plain anodized	6000 (19'8 ⁷ / ₃₂ ")	23837
			cut to size	23838
		stainless-steel effect, brushed	6000 (19'8 ⁷ / ₃₂ ")	23839
			cut to size	23840

Running track, ceiling mounting (without/for fixed glass)

Caution: - Hole positions vary - Minor differences in colour are possible			mm/inch	code
	Running track with cutout, predrilled for ceiling and integrated ceiling mounting as well as fixed glass profile, alu	plain anodized	2500 (8'2 ⁷ / ₁₆ ")	24120
		stainless-steel effect, brushed	2500 (8'2 ⁷ / ₁₆ ")	24121
	Running track, predrilled for ceiling and integrated ceiling mounting as well as fixed glass profile, alu	plain anodized	6000 (19'8 ⁷ / ₃₂ ")	24118
			cut to size	24122
		stainless-steel effect, brushed	6000 (19'8 ⁷ / ₃₂ ")	24119
			cut to size	24123

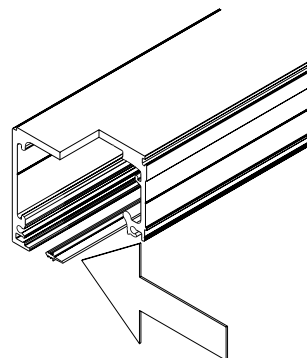
Profile for fixed glass to order separately

Cover and screen cover profile for running track

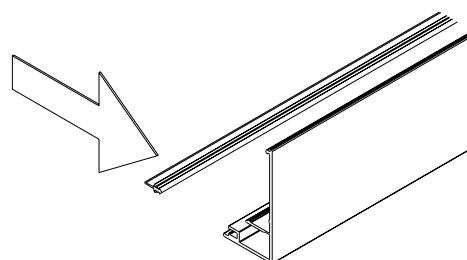
Caution: - Hole positions vary - Minor differences in colour are possible			mm/inch	code
	Angled cover profile for running track, alu	plain anodized	2500 (8'2 ⁷ / ₁₆ ")	23810
			6000 (19'8 ⁷ / ₃₂ ")	23811
			cut to size	23816
		stainless-steel effect, brushed	2500 (8'2 ⁷ / ₁₆ ")	23817
			6000 (19'8 ⁷ / ₃₂ ")	23818
			cut to size	23819
	Lower cover profile for running track, alu	plain anodized	2500 (8'2 ⁷ / ₁₆ ")	23899
			6000 (19'8 ⁷ / ₃₂ ")	23898
			cut to size	23900
		stainless-steel effect, brushed	2500 (8'2 ⁷ / ₁₆ ")	23902
			6000 (19'8 ⁷ / ₃₂ ")	23901
			cut to size	23903
	Screen cover profile for cover profile and running track	rubber black	2.5 m (8'2 ⁷ / ₁₆ ")	23909
			10 m (32'9 ²³ / ₃₂ ")	23910
			50 m (164'0 ¹ / ₂ ")	23911

Running tracks, cover- and screen cover profiles

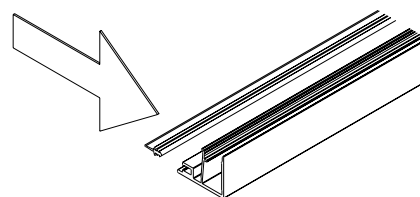
The running tracks, cover profile and screen profile are available not only as a set but also individually in lengths of 2500 mm (8'2 ⁷/₁₆"), 6000 mm (19'8 ⁷/₃₂") and cut to size. Running tracks and cover profiles are available in plain anodized aluminium or a brushed stainless steel effect; the screen profiles are made of black rubber.



Running track with screen cover profile



Angled cover profile with screen cover profile



Lower cover profile with screen cover profile

Subject to modification. Metric specifications are exact. Inches are approximate.

Profile set for fixed glass

Caution: Minor differences in colour are possible			mm/inch	code
	Profile set for fixed glass, incl. cover profile, alu, set incl. special countersunk screws, 5,5 x 19 mm ($\frac{7}{32}'' \times \frac{3}{4}''$)	plain anodized	2500 (8'2 $\frac{7}{16}''$)	24159
		stainless-steel effect, brushed	2500 (8'2 $\frac{7}{16}''$)	24160

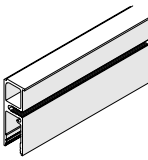


Profile for fixed glass

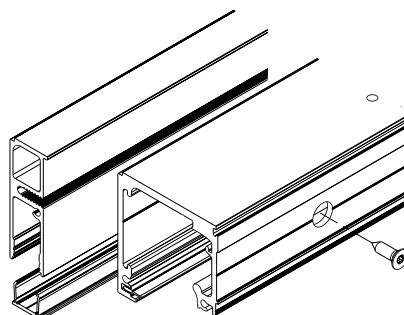
The Hawa Purolino Plus 80 is a versatile room partitioning system thanks to the combination of running track and fixed glass profile. The profile for fixed glass elements is attached to the running track with special countersunk screws.

The Hawa rubber profile or a silicone joint keeps the glass element in place without a cutout or hardware elements and prevent moisture from penetrating between glass and profile.

The clip-on cover profile is designed for the doorway area.

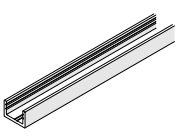
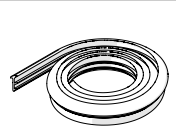
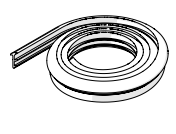
Profile for fixed glass

Caution: Minor differences in colour are possible			mm/inch	code
	Profile for fixed glass, alu	plain anodized	2500 (8'2 $\frac{7}{16}$ ")	23768
			6000 (19'8 $\frac{7}{32}$ ")	23770
			cut to size	23772
		stainless-steel effect, brushed	2500 (8'2 $\frac{7}{16}$ ")	23769
			6000 (19'8 $\frac{7}{32}$ ")	23771
			cut to size	23773
	Cover profile to profile fixed glass, alu	plain anodized	2500 (8'2 $\frac{7}{16}$ ")	20865
			6000 (19'8 $\frac{7}{32}$ ")	21229
			cut to size	19548
		stainless-steel effect, brushed	2500 (8'2 $\frac{7}{16}$ ")	21315
			6000 (19'8 $\frac{7}{32}$ ")	21283
			cut to size	21284
	Special countersunk screws, 5,5 x 19 mm ($\frac{7}{32}$ " x $\frac{3}{4}$ ") for fixing profile fixed glass to running track, set of 5 pieces, for running track length up to 2500 (8'2 $\frac{7}{16}$ ") mm			24138



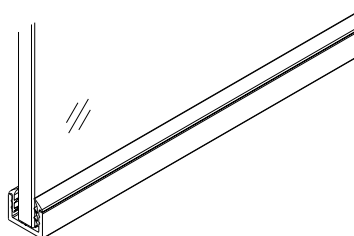
The profile for fixed glass elements is attached to the running track with special countersunk screws and covered from below with the cover profile.

Bottom, wall and rubber profile to fixed glass



Caution: - Hole positions vary - Minor differences in colour are possible		mm/inch	code
	Bottom/wall profile to fixed glass, alu, plain anodized, predrilled	4000 (13'1 $\frac{1}{2}''$)	19549
		6000 (19'8 $\frac{7}{32}''$)	19561
		cut to size	20067
	Bottom/wall profile to fixed glass, alu, stainless steel effect, brushed, predrilled	4000 (13'1 $\frac{1}{2}''$)	21285
		6000 (19'8 $\frac{7}{32}''$)	21286
		cut to size	21287
	Rubber profile, black to fixed glass 8–9.9 mm ($\frac{5}{16}'' - \frac{13}{32}''$)	roll of 10 m (32'9 $\frac{23}{32}''$)	25787
	Rubber profile, black to fixed glass 10–12 mm ($\frac{13}{32}'' - \frac{15}{32}''$)		25789
	Rubber profile, black to fixed glass 12.1–13.1 mm ($\frac{15}{32}'' - \frac{17}{32}''$)		25763

Bottom/wall profile for fixed glass

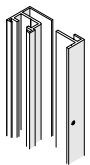

The retention profile provides stability for the fixed glass element, whether surface mounted or sunk into the floor.



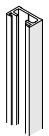

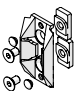

End profile set wall surface assembly

Caution: Minor differences in colour are possible			mm/inch	code
	End profile set wall surface assembly, complete, alu	plain anodized	2500 (8'2 ⁷ / ₁₆ ")	22148
			3500 (11'5 ¹³ / ₁₆ ")	22150
		stainless-steel effect, brushed	2500 (8'2 ⁷ / ₁₆ ")	22149
			3500 (11'5 ¹³ / ₁₆ ")	22151
	Rubber seal for end profile wall surface mounting		2500 (8'2 ⁷ / ₁₆ ")	22040
			3500 (11'5 ¹³ / ₁₆ ")	22041
Scope of delivery for end profile for wall surface mounting:				
<div><div>• End profile</div><div>• Flat profile 20/4 mm</div><div>• Adhesive tape</div><div>• Vertical aluminium profile</div><div>• Vertical plastic profile</div><div>• Cleaning cloth</div></div>				

Wall profile set for wall surface mounting

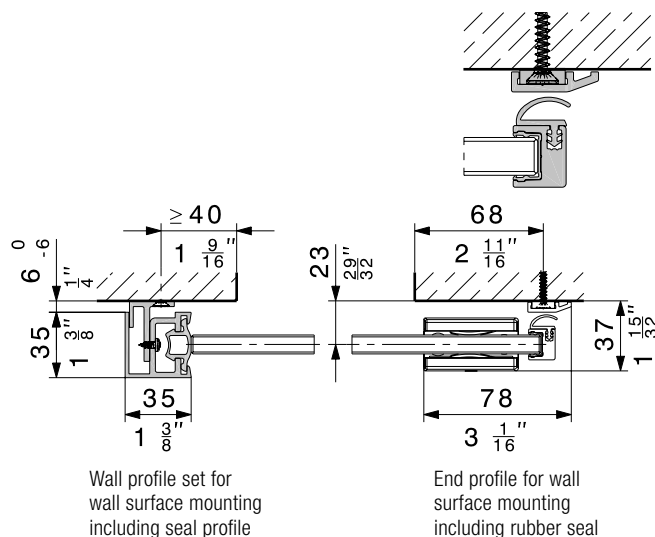
Caution: - Hole positions vary - Minor differences in colour are possible			mm/inch	code
	Wall profile set for wall surface mounting, alu, predrilled, incl. retainer profile, alu	plain anodized	2500 (8'2 ⁷ / ₁₆ ")	22144
			3500 (11'5 ¹³ / ₁₆ ")	22146
		stainless-steel effect, brushed	2500 (8'2 ⁷ / ₁₆ ")	22145
			3500 (11'5 ¹³ / ₁₆ ")	22147
	Seal profile, black, for wall profile		roll of 2500 (8'2 ⁷ / ₁₆ ")	16452
			roll of 3500 (11'5 ¹³ / ₁₆ ")	16453

Wall connection profile

Caution: Minor differences in colour are possible			mm/inch	code
	Wall profile, alu, undrilled	plain anodized	2500 (8'2 ⁷ / ₁₆ ")	17020
			3500 (11'5 ¹³ / ₁₆ ")	17021
		stainless-steel effect, brushed	2500 (8'2 ⁷ / ₁₆ ")	20119
			3500 (11'5 ¹³ / ₁₆ ")	20120
	Seal profile, black, for wall profile		roll 2500 (8'2 ⁷ / ₁₆ ")	16452
			roll 3500 (11'5 ¹³ / ₁₆ ")	16453
	Centering assembly black for all glass sliding doors, to wall profile			18663
	Centering assembly grey for all glass sliding doors			18619

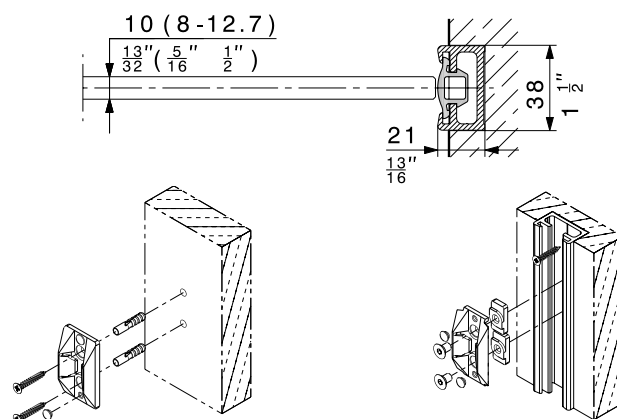
Wall surface mounting

The vertical additional profiles with rubber seals minimise the vertical gaps between the building wall and the sliding glass door. The strike plate of the Hawa Toplock for glass sliding doors can be integrated in the wall profile set with the black seal profile 16452/16453 for lockable sliding doors that run in front of a wall.

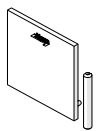


Wall connection profile

The ideal wall connection profile for glass sliding doors with unprotected glass edges.

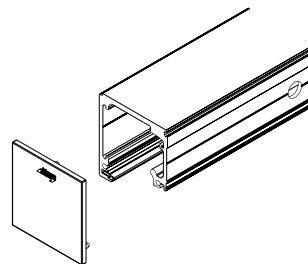


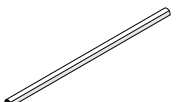
Side cover cap for running track without fixed glass

			code
	Side cover cap, incl. grub screw, metal, suitable for both sides, 1 piece	dull chromium finish	24145
		stainless steel effect	24080

Side cover cap for running track

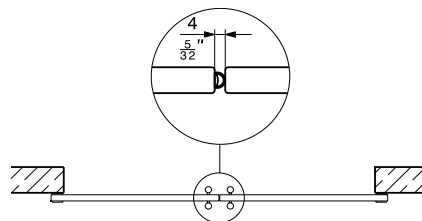
The metal (Zamak) cover cap is available in a matt chromium finish or stainless steel effect for running tracks without a fixed glass profile. It is available individually and can be fitted left or right as required.

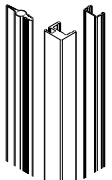
**Rubber profile for glass edge protection**

		roll of	code
	Rubber profile self-adhesive, for 8/10 mm ($\frac{5}{16}$ " / $\frac{13}{32}$ ") glass thickness, black, glass distance 4 mm ($\frac{5}{32}$ ")	5 m (16'4 $\frac{27}{32}$ ")	19442
		10 m (32'9 $\frac{23}{32}$ ")	19443
		50 m (164'1 $\frac{1}{2}$ ")	19444
	Rubber profile self-adhesive, for 8/10 mm ($\frac{5}{16}$ " / $\frac{13}{32}$ ") glass thickness, translucent, glass distance 4 mm ($\frac{5}{32}$ ")	5 m (16'4 $\frac{27}{32}$ ")	19445
		10 m (32'9 $\frac{23}{32}$ ")	19446
		50 m (164'1 $\frac{1}{2}$ ")	19447

Rubber profile for glass edge protection

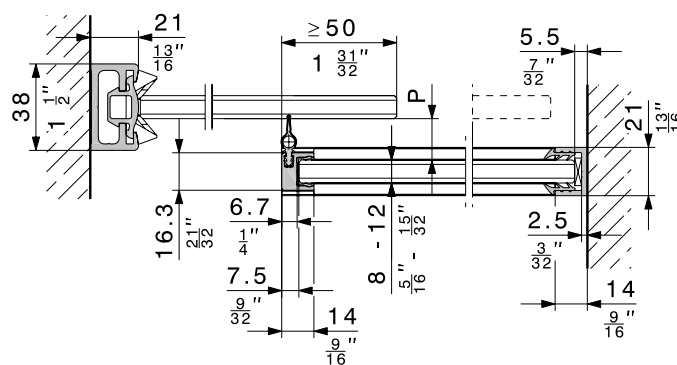
Self-adhesive rubber profile fitted along the glass edge minimises draughts and buffers impacts between adjacent glass sliding doors. Using the soft closing mechanism SoftMove 80 the doors are gently decelerated and pulled to the end position.

**Vertical sealing profile**

			mm/inch	code
	Vertical seal 20/22, alu, for all-glass sliding doors with fixed glass, set for glass distance 20–22 mm ($\frac{29}{32}$ " – $\frac{7}{8}$ ")	plain anodized	2500 (8'2 $\frac{7}{16}$ ")	20650
			3500 (11'5 $\frac{13}{16}$ ")	20651

Vertical sealing profile

The vertical sealing profile is effective against draughts. The slim aluminium profile affixes frontally to glass elements 8–12 mm ($\frac{5}{16}$ " – $\frac{15}{32}$ ") thick using silicone adhesive. The two-part rubber seal is recessed into the profile and offers three advantages: it slides almost noiselessly, creates minimal resistance to motion and, compared to conventional brush seals, retains its impeccable looks throughout years of service.

**Glass distance «P» for vertical sealing profile**

	glass thickness sliding door	Vertical seal	glass distance «P»
Hawa Purolino Plus 80	8–12 mm ($\frac{5}{16}$ " – $\frac{15}{32}$ ")	20/22	20–22 mm ($\frac{29}{32}$ " – $\frac{7}{8}$ ")

Glass sliding door and soft closing mechanism SoftMove 80

The maximum deflection of the glass element must not exceed $\pm 2 \text{ mm}$ ($\frac{3}{32}''$) to maintain the correct functionality of the soft closing mechanism SoftMove 80.

- Glass thickness sliding door ESG (fully tempered monolithic glass): 8/10/12/12,7 mm ($\frac{5}{16}"/\frac{13}{32}"/\frac{15}{32}"/\frac{1}{2}"$), thickness tolerance $\pm 0,3$ mm
- Glass thickness sliding door VSG (fully tempered laminated glass):
 $2 \times 4 \pm 0,2$ mm \rightarrow film thickness 0,38/0,76/1,52 mm
 $2 \times 5 \pm 0,2$ mm \rightarrow film thickness 0,38/0,76/1,52 mm
 $2 \times 6 \pm 0,2$ mm \rightarrow film thickness 0,38/0,76 mm
- All glass edges are seamed; maximum 1 mm ($\frac{1}{16}"$) in the glass cutout
- VSG (fully tempered laminated glass) permissible with max. offset of 2 mm ($\frac{3}{32}"$) in the glass cutout
- Glass thickness fixed glass ESG (fully tempered monolithic glass)/ VSG (fully tempered laminated glass) 8–12mm ($\frac{5}{16}"$ – $\frac{15}{32}"$) with silicone up to 13 mm ($\frac{17}{32}"$)

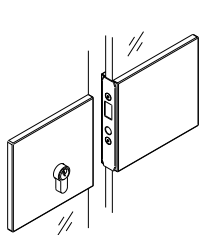
Pull handles are recommended instead of flush handles for greater convenience.

[illegible]

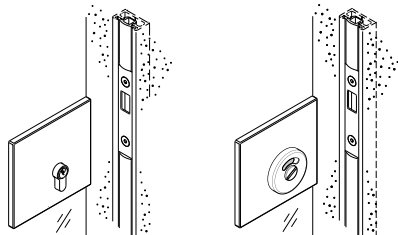
Subject to modification. Metric specifications are exact. Inches are approximate.

Better safe than sorry

The Hawa Toplock for all glass sliding doors is the ideal solution as it is aesthetically appealing and very secure. Details: → Hawa Toplock.



Hawa Toplock with counter casing



Hawa Toplock with wall profile and seal profile, black 16452/16453.

Order specifications

- Quantity of sets
- Type and quantity of running track sets
- Type and quantity of cover profiles and screen profiles

Optional order specifications

- Type and quantity of side cover caps
- Type and quantity of end profile set for wall surface mounting
- Type and quantity of wall profile set for wall surface mounting
- Type and quantity of wall joint profiles
- Type and quantity of bottom door stop
- Type and length of rubber profile for glass edge protection
- Type and quantity of additional components for VSG (fully tempered monolithic glass)

Optional order specifications fixed glass

- Type and quantity of profile set for fixed glass
- Type and quantity of bottom/wall profile and rubber profile for fixed glass
- Type and length of vertical sealing profile

Planning/installation

For planning and installation purposes, please use the installation drawing code 25557. (→ www.hawa.ch → Hawa Productfinder)

For convenient operation of sliding doors with soft closing mechanisms, use bow-type handles instead of shell handles.