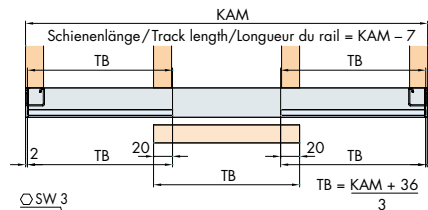
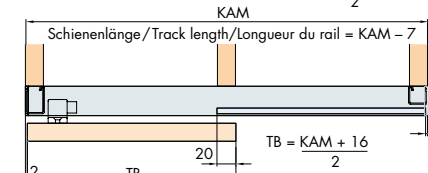
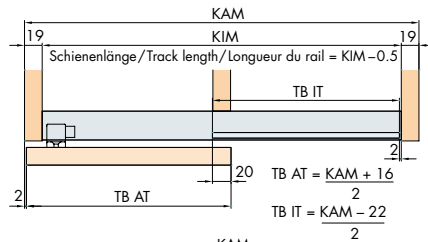
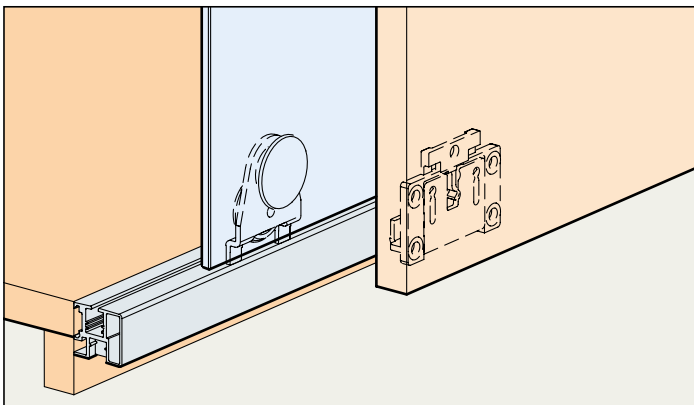


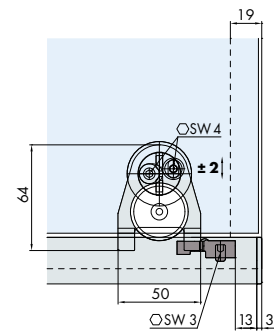
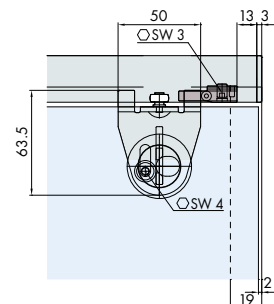
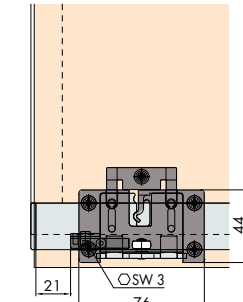
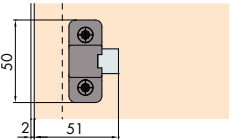
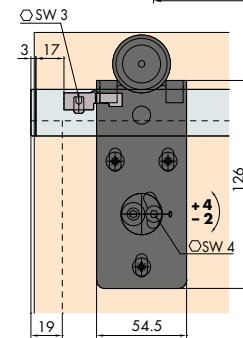
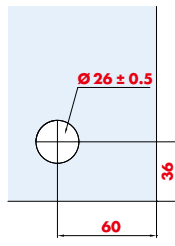
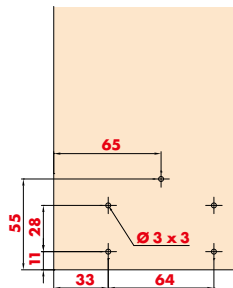
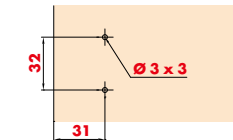
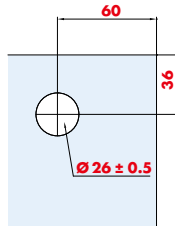
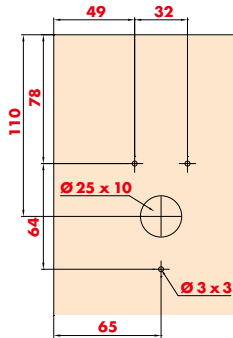
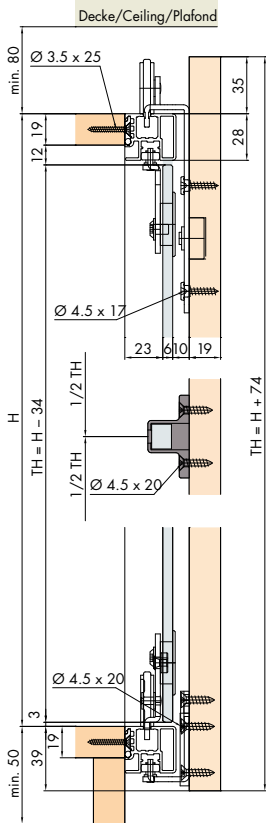
System: Clip-Schiene 31/28 mm für Holz- und Glasuren bis 25 kg. Designmix Inslide-Forslide

System: Clip-on track 31/28 mm for wooden and glass doors up to 25 kg. Design-mix Inslide-Forslide

Système: Rail à clipser 31/28 mm pour portes en bois et en verre jusqu'à 25 kg. Design mixte Inslide-Forslide



Einbaubeispiele / Mounting examples / Exemples de montage



Türbearbeitung = rote Zahlen / Door treatment = red numbers / Traitement de portes = numéros en rouge

Dämpfung optional / Soft closing optional / Amortissement facultatif 58/59

Glasempfehlung / Glass recommendation / Types de verre recommandés 77

Wichtig/Important/Important

Beschlag einsetzbar mit ESG Floatglas, ESG Satinato, ESG mit keramischem Siebdruck, Doppelspiegel oder VSG Gläser.
 (ESG = Einscheibensicherheitsglas / VSG = Verbundsicherheitsglas)

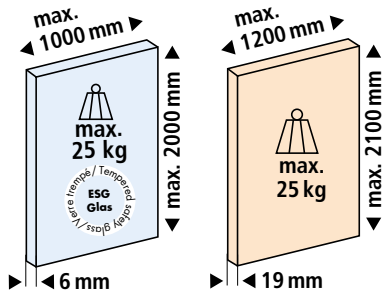
Fitting can be used in combination with ESG float glass, ESG satinato glass, ESG with ceramic screen printing, double mirror or laminated glass.
 (ESG = tempered safety glass)

Ferrure utilisable avec vitre flottée de sécurité ESG, vitre de sécurité ESG Satinato, vitre de sécurité ESG avec sérigraphie céramique, miroir double ou vitres feuilletées.

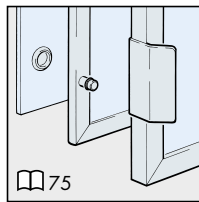
Klebstoff-Empfehlungen:

Recommended adhesive
 Colle recommandée
 • **PENLOC TYP GTI** / GZH
 74

Klebelehre
 Template for glue fixing
 Gabarit de collage
 74



Türgewichte
 Door weights
 Poids de portes
 78



Garnituren/Sets/Garnitures

2 Türen Doors Portes		No. 040.3144.071	
	2x		2x
	2x		2x
	4x		2x
	4x		2x
	4x		4x
	22x		1x
	1x		

3 Türen Doors Portes		No. 040.3144.072	
	4x		4x
	2x		2x
	4x		2x
	4x		4x
	4x		8x
	36x		1x
	1x		1x
	1x		

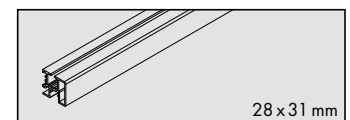
Zubehör/Accessories/Accessoires

Lauf- und Führungsschiene, Alu eloxiert, zum Aufclipsen

Running and track guide, aluminium anodized, to clip on
 Rail de roulement et de guidage, en alu anodisé, par clipsage

Gr./Size Art. No./Cat. No.

2500 mm 040.3119.250
 3500 mm 040.3119.350
 6000 mm 040.3119.600



Vertikalprofil, Alu eloxiert, zum seitlich Aufclipsen

Vertical profile, aluminium anodized, to clip on laterally
 Profil vertical, en alu anodisé, par clipsage latéral

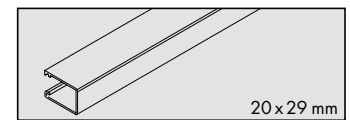
2500 mm 040.3040.250
 3500 mm 040.3040.350
 6000 mm 040.3040.600



Vertikalprofil, Alu eloxiert, seitlich zum Aufclipsen

Vertical profile, aluminium anodized, to clip on laterally
 Profil vertical, en alu anodisé, par clipsage latéral

2500 mm 040.3064.250
 3500 mm 040.3064.350
 6000 mm 040.3064.600



Sicherheitsclip, Druckguss grau, zu 040.3064/3040 (alle 400 mm)

Safety clip, die-cast grey, for 040.3064/3040 (every 400 mm)
 Clip de sécurité, moulé sous pression, gris, pour 040.3064/3040 (tous les 400 mm)

4x 040.3090.051

